



# INTERNATIONAL GEMOLOGICAL INSTITUTE

ELECTRONIC COPY

## LABORATORY GROWN DIAMOND REPORT

LG559297921

### LABORATORY GROWN DIAMOND REPORT

#### IGI LABORATORY GROWN DIAMOND IDENTIFICATION REPORT

December 14, 2022

IGI Report Number

LG559297921

Description

LABORATORY GROWN DIAMOND

Shape and Cutting Style

ROUND BRILLIANT

Measurements

6.16 - 6.20 X 3.74 MM

#### GRADING RESULTS

Carat Weight

0.87 CARAT

Color Grade

F

Clarity Grade

VVS 1

Cut Grade

IDEAL

#### ADDITIONAL GRADING INFORMATION

Polish

EXCELLENT

Symmetry

EXCELLENT

Fluorescence

NONE

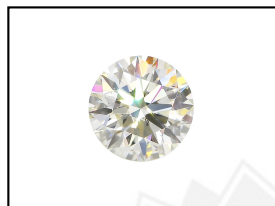
Inscription(s)

LABGROWN (IGI) LG559297921

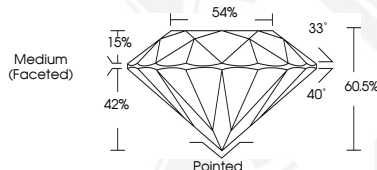
Comments: As Grown - No indication of post-growth treatment.

This Laboratory Grown Diamond was created by High Pressure High Temperature (HPHT) growth process.

Type II



**LASERSCRIBE** SM  
Sample Images Used



#### IGI LABORATORY GROWN DIAMOND ID REPORT

December 14, 2022

IGI Report Number **LG559297921**

**ROUND BRILLIANT**

**6.16 - 6.20 X 3.74 MM**

Carat Weight	0.87 CARAT
Color Grade	F
Clarity Grade	VVS 1
Cut Grade	IDEAL
Polish	EXCELLENT
Symmetry	EXCELLENT
Fluorescence	NONE
Inscription(s)	LABGROWN (IGI) LG559297921

Comments: As Grown - No indication of post-growth treatment. This Laboratory Grown Diamond was created by High Pressure High Temperature (HPHT) growth process. Type II

#### IGI LABORATORY GROWN DIAMOND ID REPORT

December 14, 2022

IGI Report Number **LG559297921**

**ROUND BRILLIANT**

**6.16 - 6.20 X 3.74 MM**

Carat Weight	0.87 CARAT
Color Grade	F
Clarity Grade	VVS 1
Cut Grade	IDEAL
Polish	EXCELLENT
Symmetry	EXCELLENT
Fluorescence	NONE
Inscription(s)	LABGROWN (IGI) LG559297921

Comments: As Grown - No indication of post-growth treatment. This Laboratory Grown Diamond was created by High Pressure High Temperature (HPHT) growth process. Type II



THIS DOCUMENT WAS PRODUCED WITH THE FOLLOWING SECURITY MEASURES: SPECIAL DOCUMENT PAPER, INK SCREENS, WATERMARK, BACKGROUND DESIGN, HOLOGRAM AND OTHER SECURITY FEATURES NOT LISTED AND DO EXCEED DOCUMENT SECURITY INDUSTRY GUIDELINES.

For terms & conditions and to verify this report, please visit [www.igi.org](http://www.igi.org)