



ELECTRONIC COPY

LABORATORY GROWN DIAMOND REPORT

December 14, 2022
 IGI Report Number **LG559298760**
 Description **LABORATORY GROWN
DIAMOND**
 Shape and Cutting Style **CUSHION BRILLIANT**
 Measurements **8.87 X 7.82 X 5.19 MM**

GRADING RESULTS

Carat Weight **3.09 CARATS**
 Color Grade **H**
 Clarity Grade **VS 2**

ADDITIONAL GRADING INFORMATION

Polish **EXCELLENT**
 Symmetry **EXCELLENT**
 Fluorescence **NONE**

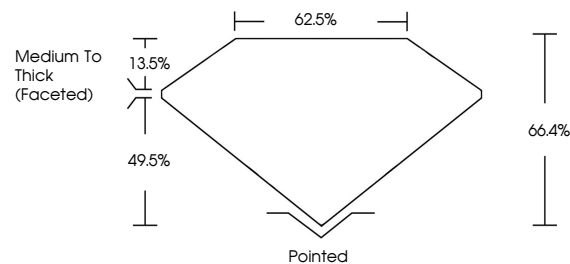
Inscription(s) **LABGROWN (LGI) LG559298760**

Comments: This Laboratory Grown Diamond was created by Chemical Vapor Deposition (CVD) growth process and may include post-growth treatment. Type IIa

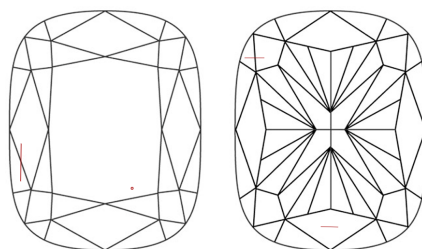
LABORATORY GROWN DIAMOND REPORT

LG559298760
 Report verification at igi.org

PROPORTIONS



CLARITY CHARACTERISTICS



KEY TO SYMBOLS

Red symbols indicate internal characteristics.
 Green symbols indicate external characteristics.

**LABORATORY GROWN
DIAMOND REPORT**

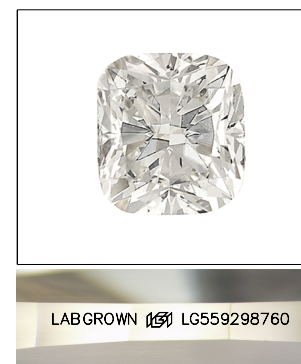
GRADING SCALES

CLARITY

| IF | VVS ¹⁻² | VS ¹⁻² | SI ¹⁻² | I ¹⁻³ |
|---------------------|-----------------------------|------------------------|-------------------|------------------|
| Internally Flawless | Very Very Slightly Included | Very Slightly Included | Slightly Included | Included |

COLOR

| D | E | F | G | H | I | J | Faint | Very Light | Light |
|---|---|---|---|---|---|---|-------|------------|-------|
|---|---|---|---|---|---|---|-------|------------|-------|

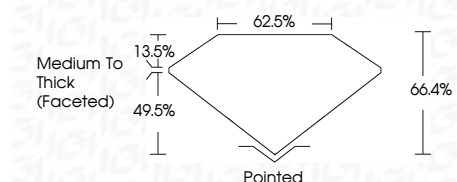


LASERSCRIBESM

Sample Image Used

LABORATORY GROWN DIAMOND REPORT

December 14, 2022
 IGI Report Number **LG559298760**
 Description **LABORATORY GROWN
DIAMOND**
 Shape and Cutting Style **CUSHION BRILLIANT**
 Measurements **8.87 X 7.82 X 5.19 MM**
GRADING RESULTS
 Carat Weight **3.09 CARATS**
 Color Grade **H**
 Clarity Grade **VS 2**



ADDITIONAL GRADING INFORMATION

Polish **EXCELLENT**
 Symmetry **EXCELLENT**
 Fluorescence **NONE**
 Inscription(s) **LABGROWN (LGI) LG559298760**

Comments: This Laboratory Grown Diamond was created by Chemical Vapor Deposition (CVD) growth process and may include post-growth treatment. Type IIa



| | | | |
|--------------------------|------------------------------|--------------------|-------------------------------|
| December 14, 2022 | IGI Report No LG559298760 | 3.09 CARATS | H |
| CUSHION BRILLIANT | 8.87 X 7.82 X 5.19 MM | VS 2 | 66.4% |
| Carat Weight | Color Grade | Clarity Grade | Depth |
| | | | Table |
| | | | Graile |
| | | | Medium To Thick (Faceted) |
| | | | Pointed |
| | | | EXCELLENT |
| | | | EXCELLENT |
| | | | NONE |
| | | | LASERSCRIBE (LGI) LG559298760 |

Comments: This Laboratory Grown Diamond was created by Chemical Vapor Deposition (CVD) growth process and may include post-growth treatment. Type IIa