



**INTERNATIONAL
GEMOLOGICAL
INSTITUTE**

ELECTRONIC COPY

**LABORATORY GROWN
DIAMOND REPORT**

LG560203341

**IGI LABORATORY GROWN
DIAMOND ID REPORT**

December 13, 2022

IGI Report Number **LG560203341**

**CUT CORNERED RECTANGULAR
MODIFIED BRILLIANT**

6.29 X 4.42 X 3.16 MM

Carat Weight 0.74 CARAT
Color Grade F
Clarity Grade VS 1
Polish EXCELLENT
Symmetry EXCELLENT
Fluorescence NONE
Inscription(s) LABGROWN IGI LG560203341

Comments: This Laboratory Grown Diamond was created by Chemical Vapor Deposition (CVD) growth process and may include post-growth treatment.Type Iia

LABORATORY GROWN DIAMOND REPORT

IGI LABORATORY GROWN DIAMOND IDENTIFICATION REPORT

December 13, 2022

IGI Report Number LG560203341

Description LABORATORY GROWN DIAMOND
Shape and Cutting Style CUT CORNERED RECTANGULAR MODIFIED BRILLIANT

Measurements 6.29 X 4.42 X 3.16 MM

GRADING RESULTS

Carat Weight 0.74 CARAT

Color Grade F

Clarity Grade VS 1

ADDITIONAL GRADING INFORMATION

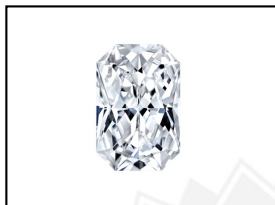
Polish EXCELLENT

Symmetry EXCELLENT

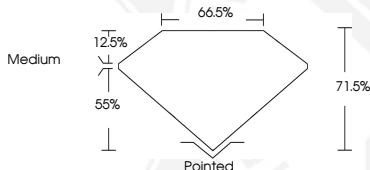
Fluorescence NONE

Inscription(s) LABGROWN IGI LG560203341

Comments: This Laboratory Grown Diamond was created by Chemical Vapor Deposition (CVD) growth process and may include post-growth treatment.
Type Iia



LASERSCRIBE SM
Sample Images Used



THIS DOCUMENT WAS PRODUCED WITH THE FOLLOWING SECURITY MEASURES: SPECIAL DOCUMENT PAPER, INK SCREENS, WATERMARK, BACKGROUND DESIGN, HOLOGRAM AND OTHER SECURITY FEATURES NOT LISTED AND DO EXCEED DOCUMENT SECURITY INDUSTRY GUIDELINES.

For terms & conditions and to verify this report, please visit www.igi.org

**IGI LABORATORY GROWN
DIAMOND ID REPORT**

December 13, 2022

IGI Report Number **LG560203341**

**CUT CORNERED RECTANGULAR
MODIFIED BRILLIANT**

6.29 X 4.42 X 3.16 MM

Carat Weight 0.74 CARAT
Color Grade F
Clarity Grade VS 1
Polish EXCELLENT
Symmetry EXCELLENT
Fluorescence NONE
Inscription(s) LABGROWN IGI LG560203341

Comments: This Laboratory Grown Diamond was created by Chemical Vapor Deposition (CVD) growth process and may include post-growth treatment.Type Iia