



**INTERNATIONAL
GEMOLOGICAL
INSTITUTE**

LABORATORY GROWN DIAMOND REPORT

IGI LABORATORY GROWN DIAMOND IDENTIFICATION REPORT

December 20, 2022
 IGI Report Number LG560231624
 Description LABORATORY GROWN DIAMOND
 Shape and Cutting Style PEAR BRILLIANT
 Measurements 5.40 X 3.72 X 2.40 MM

GRADING RESULTS

Carat Weight 0.30 CARAT
 Color Grade E
 Clarity Grade VS 1

ADDITIONAL GRADING INFORMATION

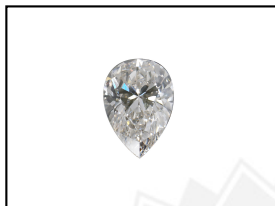
Polish VERY GOOD
 Symmetry VERY GOOD
 Fluorescence NONE
 Inscription(s) LABGROWN  LG560231624

Comments: This Laboratory Grown Diamond was created by Chemical Vapor Deposition (CVD) growth process and may include post-growth treatment. Type IIa

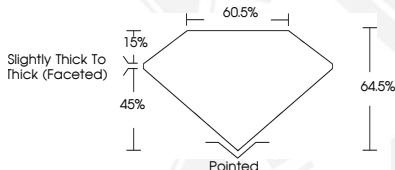
ELECTRONIC COPY

**LABORATORY GROWN
DIAMOND REPORT**


LG560231624



LASERSCRIBESM
Sample Images Used




**IGI LABORATORY GROWN
DIAMOND ID REPORT**

December 20, 2022
 IGI Report Number **LG560231624**
PEAR BRILLIANT
5.40 X 3.72 X 2.40 MM
 Carat Weight 0.30 CARAT
 Color Grade E
 Clarity Grade VS 1
 Polish VERY GOOD
 Symmetry VERY GOOD
 Fluorescence NONE
 Inscription(s) LABGROWN  LG560231624

Comments: This Laboratory Grown Diamond was created by Chemical Vapor Deposition (CVD) growth process and may include post-growth treatment. Type IIa

**IGI LABORATORY GROWN
DIAMOND ID REPORT**

December 20, 2022
 IGI Report Number **LG560231624**
PEAR BRILLIANT
5.40 X 3.72 X 2.40 MM
 Carat Weight 0.30 CARAT
 Color Grade E
 Clarity Grade VS 1
 Polish VERY GOOD
 Symmetry VERY GOOD
 Fluorescence NONE
 Inscription(s) LABGROWN  LG560231624

Comments: This Laboratory Grown Diamond was created by Chemical Vapor Deposition (CVD) growth process and may include post-growth treatment. Type IIa

 THIS DOCUMENT WAS PRODUCED WITH THE FOLLOWING SECURITY MEASURES: SPECIAL DOCUMENT PAPER, INK SCREENS, WATERMARK, BACKGROUND DESIGN, HOLOGRAM AND OTHER SECURITY FEATURES NOT LISTED AND DO EXCEED DOCUMENT SECURITY INDUSTRY GUIDELINES.

For terms & conditions and to verify this report, please visit www.igi.org