



ELECTRONIC COPY

LABORATORY GROWN DIAMOND REPORT

LG560248206

Report verification at igi.org

LABORATORY GROWN
DIAMOND REPORT

LABORATORY GROWN DIAMOND REPORT

LABORATORY GROWN DIAMOND REPORT

December 20, 2022
IGI Report Number **LG560248206**
Description **LABORATORY GROWN
DIAMOND**
Shape and Cutting Style **ROUND BRILLIANT**
Measurements **8.50 - 8.53 X 5.21 MM**

GRADING RESULTS

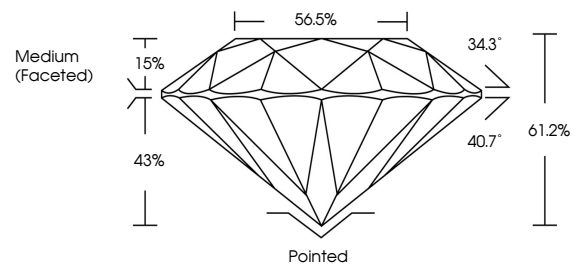
Carat Weight **2.32 CARATS**
Color Grade **F**
Clarity Grade **VVS 2**
Cut Grade **IDEAL**

ADDITIONAL GRADING INFORMATION

Polish **EXCELLENT**
Symmetry **EXCELLENT**
Fluorescence **NONE**
Inscription(s) **LABGROWN (L) LG560248206**

Comments: HEARTS & ARROWS
This Laboratory Grown Diamond was created by
Chemical Vapor Deposition (CVD) growth process and
may include post-growth treatment.
Type IIa

PROPORTIONS



CLARITY CHARACTERISTICS



KEY TO SYMBOLS

Red symbols indicate internal characteristics.
Green symbols indicate external characteristics.



www.igi.org

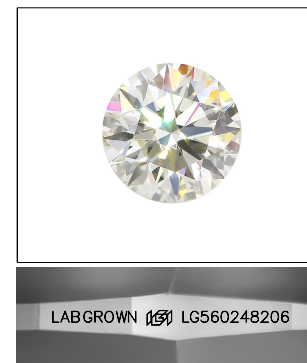
GRADING SCALES

CLARITY

IF	VVS ¹⁻²	VS ¹⁻²	SI ¹⁻²	I ¹⁻³
Internally Flawless	Very Very Slightly Included	Very Slightly Included	Slightly Included	Included

COLOR

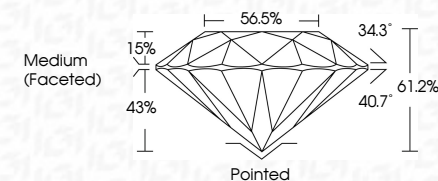
D	E	F	G	H	I	J	Faint	Very Light	Light



LASERSCRIBESM

Sample Image Used

December 20, 2022
IGI Report Number **LG560248206**
Description **LABORATORY GROWN
DIAMOND**
Shape and Cutting Style **ROUND BRILLIANT**
Measurements **8.50 - 8.53 X 5.21 MM**
GRADING RESULTS
Carat Weight **2.32 CARATS**
Color Grade **F**
Clarity Grade **VVS 2**
Cut Grade **IDEAL**



ADDITIONAL GRADING INFORMATION

Polish **EXCELLENT**
Symmetry **EXCELLENT**
Fluorescence **NONE**
Inscription(s) **LABGROWN (L) LG560248206**

Comments: HEARTS & ARROWS
This Laboratory Grown Diamond was created by
Chemical Vapor Deposition (CVD) growth process and
may include post-growth treatment.
Type IIa



IGI

December 20, 2022
IGI Report No LG560248206
ROUND BRILLIANT
8.50 - 8.53 X 5.21 MM
Carat Weight 2.32 CARATS
Color Grade F
Clarity Grade VVS 2
Cut Grade IDEAL
Depth 61.2%
Table 56.5%
Girdle Medium (Faceted)
Culet Pointed
Polish EXCELLENT
Symmetry EXCELLENT
Fluorescence NONE
Inscriptions(s) LABGROWN (L) LG560248206
Comments: HEARTS & ARROWS
This Laboratory Grown Diamond was
created by Chemical Vapor Deposition
(CVD) growth process and may include
post-growth treatment.
Type IIa