



**ELECTRONIC COPY**

## LABORATORY GROWN DIAMOND REPORT

|                         |                             |
|-------------------------|-----------------------------|
| December 30, 2022       |                             |
| IGI Report Number       | LG561281722                 |
| Description             | LABORATORY GROWN<br>DIAMOND |
| Shape and Cutting Style | OVAL BRILLIANT              |
| Measurements            | 9.72 X 6.79 X 4.08 MM       |

## GRADING RESULTS

|               |            |
|---------------|------------|
| Carat Weight  | 1.70 CARAT |
| Color Grade   | E          |
| Clarity Grade | VS 2       |

### ADDITIONAL GRADING INFORMATION

|              |           |
|--------------|-----------|
| Polish       | EXCELLENT |
| Symmetry     | VERY GOOD |
| Fluorescence | NONE      |

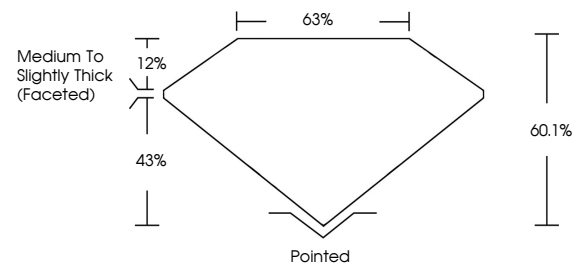
Inscription(s) **LABGROWN  LG561281722**  
 Comments: This Laboratory Grown Diamond was created by Chemical Vapor Deposition (CVD) growth process and may include post-growth treatment.  
 Type IIa

## LABORATORY GROWN DIAMOND REPORT

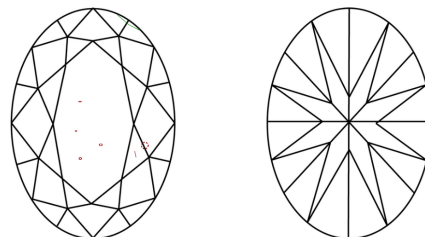
LG561281722

Report verification at [igi.org](http://igi.org)

## PROPORTIONS



## CLARITY CHARACTERISTICS



## KEY TO SYMBOLS

Red symbols indicate internal characteristics.  
Green symbols indicate external characteristics.

LABORATORY GROWN  
DIAMOND REPORT

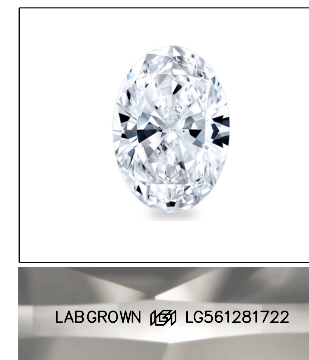
## GRADING SCALES

## CLARITY

| IF                     | VVS <sup>1-2</sup>             | VS <sup>1-2</sup>         | SI <sup>1-2</sup>    | I <sup>1-3</sup> |
|------------------------|--------------------------------|---------------------------|----------------------|------------------|
| Internally<br>Flawless | Very Very<br>Slightly Included | Very<br>Slightly Included | Slightly<br>Included | Included         |

**COLOR**

D E F G H I J Faint Very Light Light

LASERSCRIBE<sup>SM</sup>

Sample Image Used

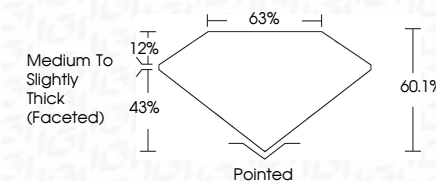


© IGI 2020, International Gemological Institute

FD - 10 20

## LABORATORY GROWN DIAMOND REPORT

|                         |                             |
|-------------------------|-----------------------------|
| December 30, 2022       |                             |
| IGI Report Number       | LG561281722                 |
| Description             | LABORATORY GROWN<br>DIAMOND |
| Shape and Cutting Style | OVAL BRILLIANT              |
| Measurements            | 9.72 X 6.79 X 4.08 MM       |
| <b>GRADING RESULTS</b>  |                             |
| Carat Weight            | 1.70 CARAT                  |
| Color Grade             | E                           |
| Clarity Grade           | VS 2                        |



### ADDITIONAL GRADING INFORMATION

|                |                           |
|----------------|---------------------------|
| Polish         | EXCELLENT                 |
| Symmetry       | VERY GOOD                 |
| Fluorescence   | NONE                      |
| Inscription(s) | LABGROWN (16) LG561281722 |

Comments: This Laboratory Grown Diamond was created by Chemical Vapor Deposition (CVD) growth process and may include post-growth treatment.  
Type IIa



|                            |   |
|----------------------------|---|
| December 30, 2022          | 1,70 CARAT  |
| IGI Report No. LG561281722 | VS 2  |
| OGAL BRILLIANT             | 60.1%   |
|                            | 65%   |
| 9.72 X 6.79 X 4.08 MM      | Medium to slightly Thick Faceted  |
| Carat Weight               | Polished  |
| Color Grade                | EXCELLENT   |
| Clarity Grade              | VERY GOOD   |
| Depth                      | NONE  |
| Table                      | LARGE/ROUND   |
| Girdle                     | LS561281722   |
| Culet                      |   |
| Polish                     |   |
| Symmetry                   |   |
| Fluorescence               |   |
| Inscriptions(s)            |   |
| Comments:                  |   |
|                            | This Laboratory Grown Diamond was treated by High Pressure High Temperature (HPHT) and may include post-growth treatment. |
|                            | See page 14   |

Comments:  
This Laboratory Grown Diamond was  
treated by Chemical Vapor Deposition  
(CVD) growth process and may include  
post-growth treatment.