



**ELECTRONIC COPY**

**LABORATORY GROWN DIAMOND REPORT**

December 30, 2022  
 IGI Report Number **LG561290538**  
 Description **LABORATORY GROWN  
DIAMOND**  
 Shape and Cutting Style **ROUND BRILLIANT**  
 Measurements **9.30 - 9.37 X 5.73 MM**

**GRADING RESULTS**

Carat Weight **3.07 CARATS**  
 Color Grade **D**  
 Clarity Grade **SI 1**  
 Cut Grade **IDEAL**

**ADDITIONAL GRADING INFORMATION**

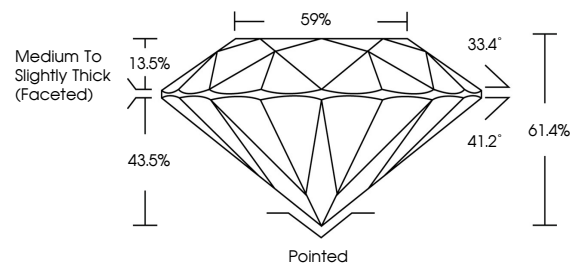
Polish **EXCELLENT**  
 Symmetry **EXCELLENT**  
 Fluorescence **NONE**  
 Inscription(s) **LABGROWN (IGI) LG561290538**

Comments: As Grown - No indication of post-growth treatment.  
 This Laboratory Grown Diamond was created by High Pressure High Temperature (HPHT) growth process. Type II

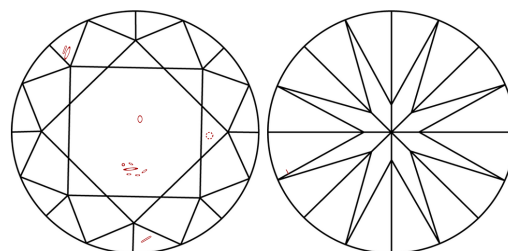
**LABORATORY GROWN DIAMOND REPORT**

**LG561290538**  
 Report verification at igi.org

**PROPORTIONS**



**CLARITY CHARACTERISTICS**



**KEY TO SYMBOLS**

Red symbols indicate internal characteristics.  
 Green symbols indicate external characteristics.

**LABORATORY GROWN  
DIAMOND REPORT**

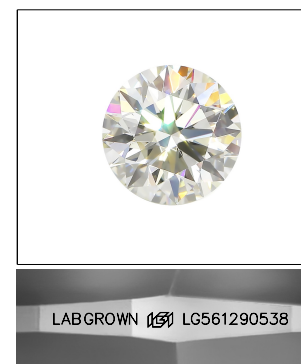
**GRADING SCALES**

**CLARITY**

IF	VVS <sup>1-2</sup>	VS <sup>1-2</sup>	SI <sup>1-2</sup>	I <sup>1-3</sup>
Internally Flawless	Very Very Slightly Included	Very Slightly Included	Slightly Included	Included

**COLOR**

D	E	F	G	H	I	J	Faint	Very Light	Light
---	---	---	---	---	---	---	-------	------------	-------

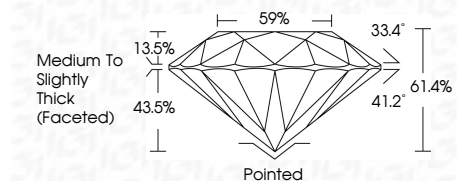


**LASERSCRIBE<sup>SM</sup>**

Sample Image Used

**LABORATORY GROWN DIAMOND REPORT**

December 30, 2022  
 IGI Report Number **LG561290538**  
 Description **LABORATORY GROWN  
DIAMOND**  
 Shape and Cutting Style **ROUND BRILLIANT**  
 Measurements **9.30 - 9.37 X 5.73 MM**  
**GRADING RESULTS**  
 Carat Weight **3.07 CARATS**  
 Color Grade **D**  
 Clarity Grade **SI 1**  
 Cut Grade **IDEAL**



**ADDITIONAL GRADING INFORMATION**

Polish **EXCELLENT**  
 Symmetry **EXCELLENT**  
 Fluorescence **NONE**  
 Inscription(s) **LABGROWN (IGI) LG561290538**  
 Comments: As Grown - No indication of post-growth treatment.  
 This Laboratory Grown Diamond was created by High Pressure High Temperature (HPHT) growth process. Type II



December 30, 2022  
 IGI Report No LG561290538  
**ROUND BRILLIANT**  
 9.30 - 9.37 X 5.73 MM  
 3.07 CARATS  
 Carat Weight  
 Color Grade **D**  
 Clarity Grade **SI 1**  
 Cut Grade **IDEAL**  
 Depth **61.4%**  
 Table **59%**  
 Girdle **Medium To Slightly Thick (Faceted)**  
 Culet **Pointed**  
 Polish **EXCELLENT**  
 Symmetry **EXCELLENT**  
 Fluorescence **NONE**  
 Inscription(s) **LABGROWN (IGI) LG561290538**  
 Comments: **As Grown - No indication of post-growth treatment. This Laboratory Grown Diamond was created by High Pressure High Temperature (HPHT) growth process. Type II**