



ELECTRONIC COPY

LABORATORY GROWN DIAMOND REPORT

LG561291058

Report verification at igi.org

**LABORATORY GROWN
DIAMOND REPORT**

LABORATORY GROWN DIAMOND REPORT

LABORATORY GROWN DIAMOND REPORT

January 4, 2023
 IGI Report Number **LG561291058**
 Description **LABORATORY GROWN
DIAMOND**
 Shape and Cutting Style **ROUND BRILLIANT**
 Measurements **10.38 - 10.45 X 6.38 MM**

GRADING RESULTS

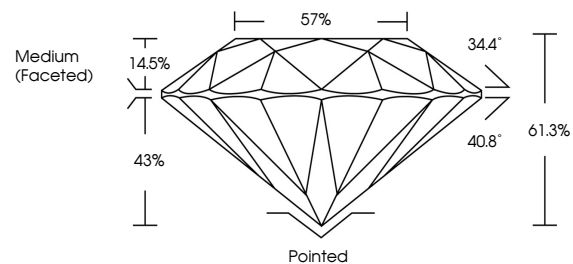
Carat Weight **4.26 CARATS**
 Color Grade **F**
 Clarity Grade **SI 1**
 Cut Grade **IDEAL**

ADDITIONAL GRADING INFORMATION

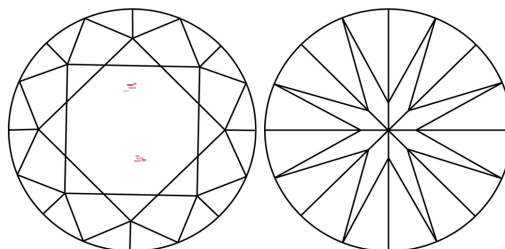
Polish **EXCELLENT**
 Symmetry **EXCELLENT**
 Fluorescence **NONE**
 Inscription(s) **LABGROWN (IGI) LG561291058**

Comments: As Grown - No indication of post-growth treatment.
 This Laboratory Grown Diamond was created by High Pressure High Temperature (HPHT) growth process. Type II

PROPORTIONS



CLARITY CHARACTERISTICS



KEY TO SYMBOLS

Red symbols indicate internal characteristics.
 Green symbols indicate external characteristics.

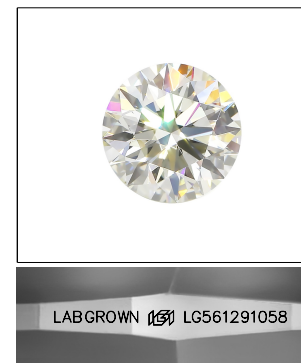
GRADING SCALES

CLARITY

IF	VVS ¹⁻²	VS ¹⁻²	SI ¹⁻²	I ¹⁻³
Internally Flawless	Very Very Slightly Included	Very Slightly Included	Slightly Included	Included

COLOR

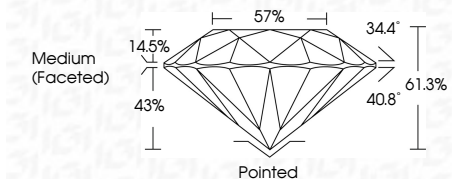
D	E	F	G	H	I	J	Faint	Very Light	Light
---	---	---	---	---	---	---	-------	------------	-------



LASERSCRIBESM

Sample Image Used

January 4, 2023
 IGI Report Number **LG561291058**
 Description **LABORATORY GROWN
DIAMOND**
 Shape and Cutting Style **ROUND BRILLIANT**
 Measurements **10.38 - 10.45 X 6.38 MM**
GRADING RESULTS
 Carat Weight **4.26 CARATS**
 Color Grade **F**
 Clarity Grade **SI 1**
 Cut Grade **IDEAL**



ADDITIONAL GRADING INFORMATION

Polish **EXCELLENT**
 Symmetry **EXCELLENT**
 Fluorescence **NONE**
 Inscription(s) **LABGROWN (IGI) LG561291058**
 Comments: As Grown - No indication of post-growth treatment.
 This Laboratory Grown Diamond was created by High Pressure High Temperature (HPHT) growth process. Type II



IGI

January 4, 2023
 IGI Report No LG561291058
ROUND BRILLIANT
 10.38 - 10.45 X 6.38 MM
 Carat Weight **4.26 CARATS**
 Color Grade **F**
 Clarity Grade **SI 1**
 Cut Grade **IDEAL**
 Depth **61.3%**
 Table **57%**
 Girdle **Medium (Faceted)**
 Culet **Pointed**
 Polish **EXCELLENT**
 Symmetry **EXCELLENT**
 Fluorescence **NONE**
 Inscription(s) **LABGROWN (IGI) LG561291058**
 Comments: As Grown - No indication of post-growth treatment.
 This Laboratory Grown Diamond was created by High Pressure High Temperature (HPHT) growth process. Type II

