



ELECTRONIC COPY

LABORATORY GROWN DIAMOND REPORT

| | |
|-------------------------|-----------------------------|
| Description | LABORATORY GROWN DIAMOND |
| Shape and Cutting Style | OVAL BRILLIANT |
| Measurements | 13.91 X 9.44 X 6.02 MM |

GRADING RESULTS

| | |
|---------------|-------------|
| Carat Weight | 5.02 CARATS |
| Color Grade | H |
| Clarity Grade | VS 1 |

ADDITIONAL GRADING INFORMATION

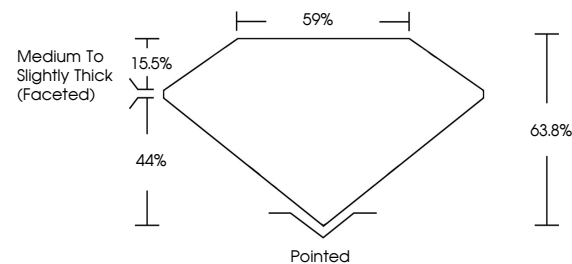
| | |
|--------------|-----------|
| Polish | EXCELLENT |
| Symmetry | EXCELLENT |
| Fluorescence | NONE |

Inscription(s) **LABGROWN  LG563213007**
 Comments: This Laboratory Grown Diamond was created by Chemical Vapor Deposition (CVD) growth process and may include post-growth treatment.
 Type IIa

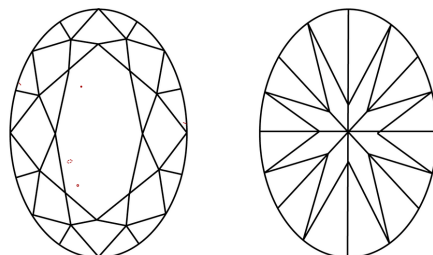
LABORATORY GROWN DIAMOND REPORT

LG563213007
Report verification at lgi.org

PROPORTIONS



CLARITY CHARACTERISTICS



KEY TO SYMBOLS

Red symbols indicate internal characteristics.
Green symbols indicate external characteristics.

LABORATORY GROWN
DIAMOND REPORT

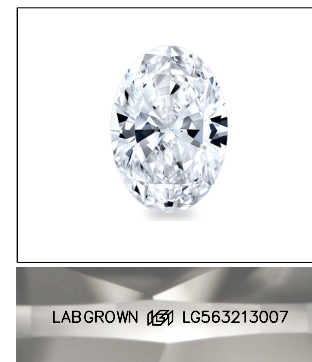
GRADING SCALES

CLARITY

| IF | VVS ¹⁻² | VS ¹⁻² | SI ¹⁻² | I ¹⁻³ |
|------------------------|--------------------------------|---------------------------|----------------------|------------------|
| Internally Flawless | Very Very Slightly Included | Very Slightly Included | Slightly Included | Included |

COLOR

D E F G H I J Faint Very Light Light

LASERSCRIBESM

Sample Image Used



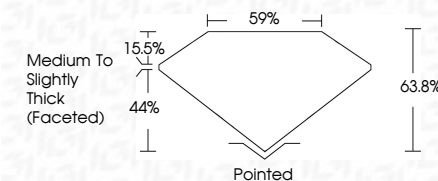
© IGI 2020, International Gemological Institute

FD - 10 20

www.igi.org

LABORATORY GROWN DIAMOND REPORT

| | |
|-------------------------|-----------------------------|
| January 7, 2023 | |
| IGI Report Number | LG563213007 |
| Description | LABORATORY GROWN DIAMOND |
| Shape and Cutting Style | OVAL BRILLIANT |
| Measurements | 13.91 X 9.44 X 6.02 MM |
| GRADING RESULTS | |
| Carat Weight | 5.02 CARATS |
| Color Grade | H |
| Clarity Grade | VS 1 |



ADDITIONAL GRADING INFORMATION

| | |
|----------------|----------------------------|
| Polish | EXCELLENT |
| Symmetry | EXCELLENT |
| Fluorescence | NONE |
| Inscription(s) | LABGROWN (157) LG563213007 |

Comments: This Laboratory Grown Diamond was created by Chemical Vapor Deposition (CVD) growth process and may include post-growth treatment.
Type IIa



January 7, 2023
IGI Report No LG563213007
OVAL BRILLIANT

| | | |
|------------------------|---------------|------------------------------------|
| 13.91 x 9.41 x 6.02 MM | Carat Weight | 5.02 CARATS |
| | Color Grade | H |
| | Clarity Grade | VS 1 |
| | Depth | 63.9% |
| | Table | 59% |
| | Girdle | Medium To Slightly Thick (Faceted) |
| | Culet | Pointed |
| | Polish | EXCELLENT |
| | Symmetry | EXCELLENT |
| | Fluorescence | NONE |
| | Inscriptions | LABGROWN 999 |

Comments: This Laboratory Grown Diamond was created by Chemical Vapor Deposition (CVD) growth process and may include post-growth treatment.