



**INTERNATIONAL
GEMOLOGICAL
INSTITUTE**

LABORATORY GROWN DIAMOND REPORT

IGI LABORATORY GROWN DIAMOND IDENTIFICATION REPORT

January 23, 2023
 IGI Report Number LG563222750
 Description LABORATORY GROWN DIAMOND
 Shape and Cutting Style PEAR BRILLIANT
 Measurements 6.37 X 3.89 X 2.42 MM

GRADING RESULTS

Carat Weight 0.37 CARAT
 Color Grade F
 Clarity Grade VVS 2

ADDITIONAL GRADING INFORMATION

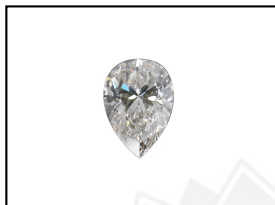
Polish EXCELLENT
 Symmetry EXCELLENT
 Fluorescence NONE
 Inscription(s) LABGROWN (IGI) LG563222750

Comments: This Laboratory Grown Diamond was created by Chemical Vapor Deposition (CVD) growth process and may include post-growth treatment. Type IIa

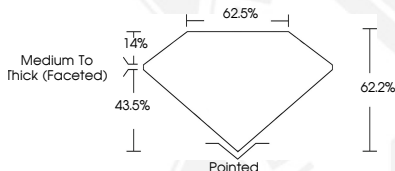
ELECTRONIC COPY

**LABORATORY GROWN
DIAMOND REPORT**

LG563222750



LASERSCRIBESM
Sample Images Used



**IGI LABORATORY GROWN
DIAMOND ID REPORT**

January 23, 2023
 IGI Report Number **LG563222750**
PEAR BRILLIANT
6.37 X 3.89 X 2.42 MM
 Carat Weight 0.37 CARAT
 Color Grade F
 Clarity Grade VVS 2
 Polish EXCELLENT
 Symmetry EXCELLENT
 Fluorescence NONE
 Inscription(s) LABGROWN (IGI) LG563222750

Comments: This Laboratory Grown Diamond was created by Chemical Vapor Deposition (CVD) growth process and may include post-growth treatment. Type IIa

**IGI LABORATORY GROWN
DIAMOND ID REPORT**

January 23, 2023
 IGI Report Number **LG563222750**
PEAR BRILLIANT
6.37 X 3.89 X 2.42 MM
 Carat Weight 0.37 CARAT
 Color Grade F
 Clarity Grade VVS 2
 Polish EXCELLENT
 Symmetry EXCELLENT
 Fluorescence NONE
 Inscription(s) LABGROWN (IGI) LG563222750

Comments: This Laboratory Grown Diamond was created by Chemical Vapor Deposition (CVD) growth process and may include post-growth treatment. Type IIa

THIS DOCUMENT WAS PRODUCED WITH THE FOLLOWING SECURITY MEASURES: SPECIAL DOCUMENT PAPER, INK SCREENS, WATERMARK, BACKGROUND DESIGN, HOLOGRAM AND OTHER SECURITY FEATURES NOT LISTED AND DO EXCEED DOCUMENT SECURITY INDUSTRY GUIDELINES.

For terms & conditions and to verify this report, please visit www.igi.org