



ELECTRONIC COPY

LABORATORY GROWN DIAMOND REPORT

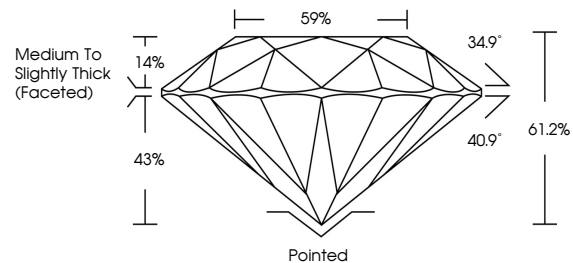
February 1, 2023
IGI Report Number LG563223558
Description LABORATORY GROWN DIAMOND
Shape and Cutting Style ROUND BRILLIANT
Measurements 10.47 - 10.51 X 6.42 MM
GRADING RESULTS
Carat Weight 4.36 CARATS
Color Grade F
Clarity Grade VVS 2
Cut Grade IDEAL

ADDITIONAL GRADING INFORMATION

Polish EXCELLENT
Symmetry EXCELLENT
Fluorescence NONE
Inscription(s) LG563223558

Comments: HEARTS & ARROWS
This Laboratory Grown Diamond was created by Chemical Vapor Deposition (CVD) growth process and may include post-growth treatment.
Type IIa

PROPORTIONS



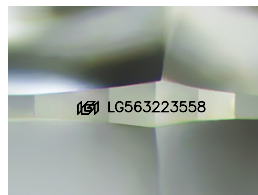
GRADING SCALES

CLARITY

Table mapping clarity grades: IF (Internally Flawless), VVS 1-2 (Very Very Slightly Included), VS 1-2 (Very Slightly Included), SI 1-2 (Slightly Included), I 1-3 (Included).

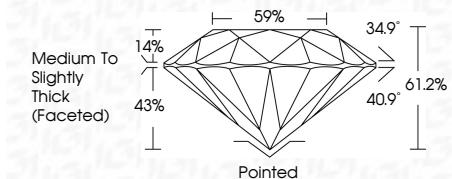
COLOR

Table mapping color grades: D, E, F, G, H, I, J, Faint, Very Light, Light.



Sample Image Used

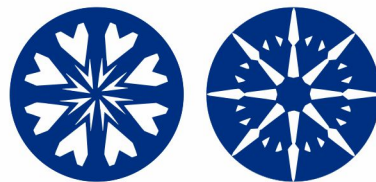
February 1, 2023
IGI Report Number LG563223558
Description LABORATORY GROWN DIAMOND
Shape and Cutting Style ROUND BRILLIANT
Measurements 10.47 - 10.51 X 6.42 MM
GRADING RESULTS
Carat Weight 4.36 CARATS
Color Grade F
Clarity Grade VVS 2
Cut Grade IDEAL



ADDITIONAL GRADING INFORMATION

Polish EXCELLENT
Symmetry EXCELLENT
Fluorescence NONE
Inscription(s) LG563223558

Comments: HEARTS & ARROWS
This Laboratory Grown Diamond was created by Chemical Vapor Deposition (CVD) growth process and may include post-growth treatment.
Type IIa



Summary table containing report details: February 1, 2023, IGI Report No. LG563223558, ROUND BRILLIANT, 10.47 - 10.51 X 6.42 MM, 4.36 CARATS, F, VVS 2, IDEAL, 61.2%, 59%, Medium To Slightly Thick (Faceted), Pointed, EXCELLENT, EXCELLENT, NONE, LG563223558.

Comments: HEARTS & ARROWS
This Laboratory Grown Diamond was created by Chemical Vapor Deposition (CVD) growth process and may include post-growth treatment.
Type IIa