



**INTERNATIONAL  
GEMOLOGICAL  
INSTITUTE**

**ELECTRONIC COPY**

**LABORATORY GROWN  
DIAMOND REPORT**

**IGI LABORATORY GROWN  
DIAMOND ID REPORT**

January 13, 2023  
IGI Report Number **LG563229260**  
**PEAR BRILLIANT**  
**7.41 X 4.92 X 2.76 MM**  
Carat Weight 0.58 CARAT  
Color Grade F  
Clarity Grade VS 2  
Polish GOOD  
Symmetry GOOD  
Fluorescence NONE  
Inscription(s) **LABGROWN IGI LG563229260**

Comments: This Laboratory Grown Diamond was created by Chemical Vapor Deposition (CVD) growth process and may include post-growth treatment.Type Ila

**LABORATORY GROWN DIAMOND REPORT**

**IGI LABORATORY GROWN DIAMOND IDENTIFICATION REPORT**

January 13, 2023  
IGI Report Number **LG563229260**  
Description **LABORATORY GROWN DIAMOND**  
Shape and Cutting Style **PEAR BRILLIANT**  
Measurements **7.41 X 4.92 X 2.76 MM**

**GRADING RESULTS**

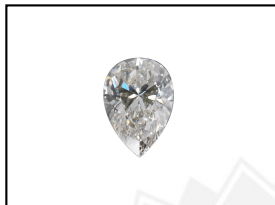
Carat Weight 0.58 CARAT  
Color Grade F  
Clarity Grade VS 2

**ADDITIONAL GRADING INFORMATION**

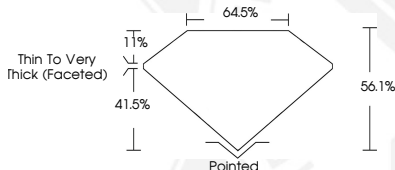
Polish GOOD  
Symmetry GOOD  
Fluorescence NONE  
Inscription(s) **LABGROWN IGI LG563229260**

Comments: This Laboratory Grown Diamond was created by Chemical Vapor Deposition (CVD) growth process and may include post-growth treatment.  
Type Ila

**LG563229260**



**LASERSCRIBE<sup>SM</sup>**  
Sample Images Used



**IGI LABORATORY GROWN  
DIAMOND ID REPORT**

January 13, 2023  
IGI Report Number **LG563229260**  
**PEAR BRILLIANT**  
**7.41 X 4.92 X 2.76 MM**  
Carat Weight 0.58 CARAT  
Color Grade F  
Clarity Grade VS 2  
Polish GOOD  
Symmetry GOOD  
Fluorescence NONE  
Inscription(s) **LABGROWN IGI LG563229260**

Comments: This Laboratory Grown Diamond was created by Chemical Vapor Deposition (CVD) growth process and may include post-growth treatment.Type Ila

THIS DOCUMENT WAS PRODUCED WITH THE FOLLOWING SECURITY MEASURES: SPECIAL DOCUMENT PAPER, INK SCREENS, WATERMARK, BACKGROUND DESIGN, HOLOGRAM AND OTHER SECURITY FEATURES NOT LISTED AND DO EXCEED DOCUMENT SECURITY INDUSTRY GUIDELINES.

For terms & conditions and to verify this report, please visit [www.igi.org](http://www.igi.org)