



**ELECTRONIC COPY**

**LABORATORY GROWN DIAMOND REPORT**

LG563231618

Report verification at igi.org

**LABORATORY GROWN  
DIAMOND REPORT**

**LABORATORY GROWN DIAMOND REPORT**

**LABORATORY GROWN DIAMOND REPORT**

January 9, 2023  
IGI Report Number **LG563231618**  
Description **LABORATORY GROWN  
DIAMOND**  
Shape and Cutting Style **HEART BRILLIANT**  
Measurements **11.06 X 12.87 X 7.54 MM**

**GRADING RESULTS**

Carat Weight **6.19 CARATS**  
Color Grade **G**  
Clarity Grade **VS 1**

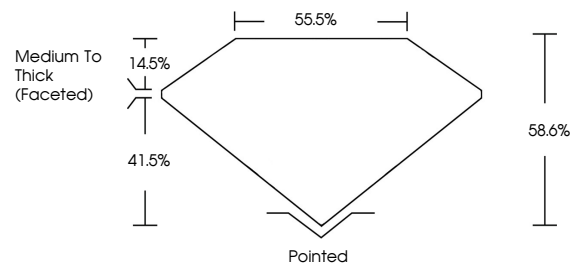
**ADDITIONAL GRADING INFORMATION**

Polish **EXCELLENT**  
Symmetry **EXCELLENT**  
Fluorescence **NONE**

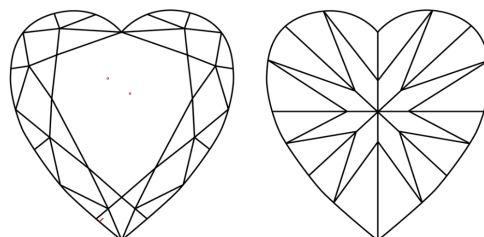
Inscription(s) **LABGROWN (LGI) LG563231618**

Comments: This Laboratory Grown Diamond was created by Chemical Vapor Deposition (CVD) growth process and may include post-growth treatment. Type IIa

**PROPORTIONS**



**CLARITY CHARACTERISTICS**



**KEY TO SYMBOLS**

Red symbols indicate internal characteristics.  
Green symbols indicate external characteristics.

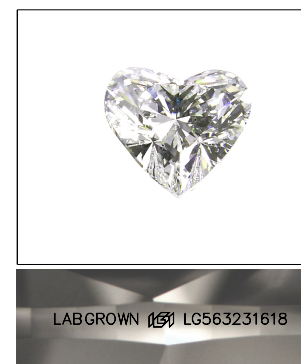
**GRADING SCALES**

**CLARITY**

IF	VVS <sup>1-2</sup>	VS <sup>1-2</sup>	SI <sup>1-2</sup>	I <sup>1-3</sup>
Internally Flawless	Very Very Slightly Included	Very Slightly Included	Slightly Included	Included

**COLOR**

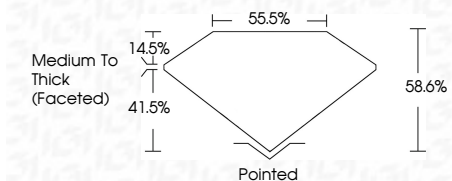
D	E	F	G	H	I	J	Faint	Very Light	Light
---	---	---	---	---	---	---	-------	------------	-------



**LASERSCRIBE<sup>SM</sup>**

Sample Image Used

January 9, 2023  
IGI Report Number **LG563231618**  
Description **LABORATORY GROWN  
DIAMOND**  
Shape and Cutting Style **HEART BRILLIANT**  
Measurements **11.06 X 12.87 X 7.54 MM**  
**GRADING RESULTS**  
Carat Weight **6.19 CARATS**  
Color Grade **G**  
Clarity Grade **VS 1**



**ADDITIONAL GRADING INFORMATION**

Polish **EXCELLENT**  
Symmetry **EXCELLENT**  
Fluorescence **NONE**  
Inscription(s) **LABGROWN (LGI) LG563231618**

Comments: This Laboratory Grown Diamond was created by Chemical Vapor Deposition (CVD) growth process and may include post-growth treatment. Type IIa



**IGI**

January 9, 2023  
IGI Report No LG563231618  
**HEART BRILLIANT**  
11.06 X 12.87 X 7.54 MM  
Carat Weight **6.19 CARATS**  
Color Grade **G**  
Clarity Grade **VS 1**  
Depth **58.6%**  
Table **55.5%**  
Girdle **Medium To Thick (Faceted)**  
Culet **Pointed**  
Polish **EXCELLENT**  
Symmetry **EXCELLENT**  
Fluorescence **NONE**  
Inscription(s) **LABGROWN (LGI) LG563231618**

Comments: This Laboratory Grown Diamond was created by Chemical Vapor Deposition (CVD) growth process and may include post-growth treatment. Type IIa