



**INTERNATIONAL
GEMOLOGICAL
INSTITUTE**

ELECTRONIC COPY

**LABORATORY GROWN
DIAMOND REPORT**

LG563233313

**IGI LABORATORY GROWN
DIAMOND ID REPORT**

January 16, 2023
IGI Report Number **LG563233313**
OVAL BRILLIANT
6.68 X 4.38 X 2.92 MM
Carat Weight 0.58 CARAT
Color Grade FANCY VIVID PINK
Clarity Grade VVS 2
Polish VERY GOOD
Symmetry VERY GOOD
Fluorescence SLIGHT
Inscription(s) LABGROWN (LGI) LG563233313

Comments: This Laboratory Grown Diamond was created by Chemical Vapor Deposition (CVD) growth process. Indications of post-growth treatment.

LABORATORY GROWN DIAMOND REPORT

IGI LABORATORY GROWN DIAMOND IDENTIFICATION REPORT

January 16, 2023
IGI Report Number LG563233313
Description LABORATORY GROWN DIAMOND
Shape and Cutting Style OVAL BRILLIANT
Measurements 6.68 X 4.38 X 2.92 MM

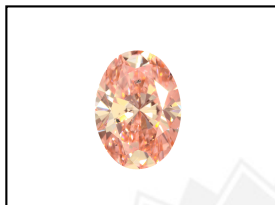
GRADING RESULTS

Carat Weight 0.58 CARAT
Color Grade FANCY VIVID PINK
Clarity Grade VVS 2

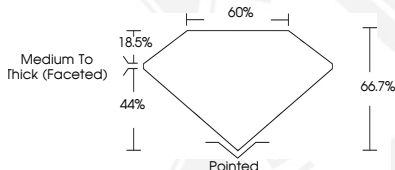
ADDITIONAL GRADING INFORMATION

Polish VERY GOOD
Symmetry VERY GOOD
Fluorescence SLIGHT
Inscription(s) LABGROWN (LGI) LG563233313

Comments: This Laboratory Grown Diamond was created by Chemical Vapor Deposition (CVD) growth process. Indications of post-growth treatment.



LASERSCRIBESM
Sample Images Used



**IGI LABORATORY GROWN
DIAMOND ID REPORT**

January 16, 2023
IGI Report Number **LG563233313**
OVAL BRILLIANT
6.68 X 4.38 X 2.92 MM
Carat Weight 0.58 CARAT
Color Grade FANCY VIVID PINK
Clarity Grade VVS 2
Polish VERY GOOD
Symmetry VERY GOOD
Fluorescence SLIGHT
Inscription(s) LABGROWN (LGI) LG563233313

Comments: This Laboratory Grown Diamond was created by Chemical Vapor Deposition (CVD) growth process. Indications of post-growth treatment.

THIS DOCUMENT WAS PRODUCED WITH THE FOLLOWING SECURITY MEASURES: SPECIAL DOCUMENT PAPER, INK SCREENS, WATERMARK, BACKGROUND DESIGN, HOLOGRAM AND OTHER SECURITY FEATURES NOT LISTED AND DO EXCEED DOCUMENT SECURITY INDUSTRY GUIDELINES.

For terms & conditions and to verify this report, please visit www.igi.org