



**ELECTRONIC COPY**

LABORATORY GROWN DIAMOND REPORT

LG563297261

Report verification at [igi.org](http://igi.org)

LABORATORY GROWN  
DIAMOND REPORT

LABORATORY GROWN DIAMOND REPORT

LABORATORY GROWN DIAMOND REPORT

December 31, 2022  
IGI Report Number **LG563297261**  
Description **LABORATORY GROWN  
DIAMOND**  
Shape and Cutting Style **HEART BRILLIANT**  
Measurements **7.20 X 7.91 X 4.81 MM**

**GRADING RESULTS**

Carat Weight **1.59 CARAT**  
Color Grade **G**  
Clarity Grade **VVS 2**

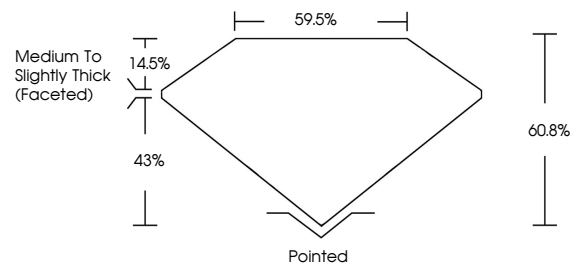
**ADDITIONAL GRADING INFORMATION**

Polish **EXCELLENT**  
Symmetry **EXCELLENT**  
Fluorescence **NONE**

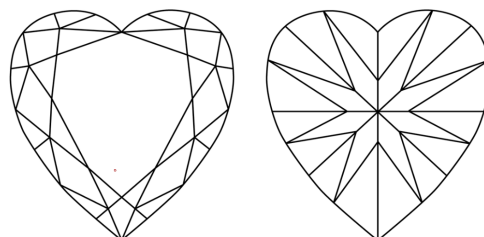
Inscription(s) **LABGROWN (LGI) LG563297261**

Comments: This Laboratory Grown Diamond was created by Chemical Vapor Deposition (CVD) growth process and may include post-growth treatment. Type IIa

**PROPORTIONS**



**CLARITY CHARACTERISTICS**



**KEY TO SYMBOLS**

Red symbols indicate internal characteristics.  
Green symbols indicate external characteristics.

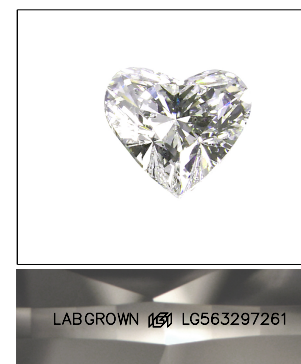
**GRADING SCALES**

**CLARITY**

IF	VVS <sup>1-2</sup>	VS <sup>1-2</sup>	SI <sup>1-2</sup>	I <sup>1-3</sup>
Internally Flawless	Very Very Slightly Included	Very Slightly Included	Slightly Included	Included

**COLOR**

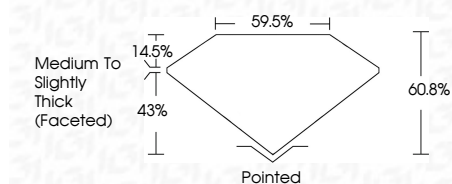
D	E	F	G	H	I	J	Faint	Very Light	Light
---	---	---	---	---	---	---	-------	------------	-------



**LASERSCRIBE<sup>SM</sup>**

Sample Image Used

December 31, 2022  
IGI Report Number **LG563297261**  
Description **LABORATORY GROWN  
DIAMOND**  
Shape and Cutting Style **HEART BRILLIANT**  
Measurements **7.20 X 7.91 X 4.81 MM**  
**GRADING RESULTS**  
Carat Weight **1.59 CARAT**  
Color Grade **G**  
Clarity Grade **VVS 2**



**ADDITIONAL GRADING INFORMATION**

Polish **EXCELLENT**  
Symmetry **EXCELLENT**  
Fluorescence **NONE**  
Inscription(s) **LABGROWN (LGI) LG563297261**

Comments: This Laboratory Grown Diamond was created by Chemical Vapor Deposition (CVD) growth process and may include post-growth treatment. Type IIa



**IGI**



December 31, 2022  
IGI Report No LG563297261  
**HEART BRILLIANT**  
7.20 X 7.91 X 4.81 MM  
1.59 CARAT  
Color Grade **G**  
Clarity Grade **VVS 2**  
Depth 60.8%  
Table 59.05%  
Girdle Medium to Slightly Thick (Faceted)  
Culet Pointed  
Polish **EXCELLENT**  
Symmetry **EXCELLENT**  
Fluorescence **NONE**  
Inscription(s) **LABGROWN (LGI) LG563297261**  
Comments: This Laboratory Grown Diamond was created by Chemical Vapor Deposition (CVD) growth process and may include post-growth treatment. Type IIa