



**ELECTRONIC COPY**

**LABORATORY GROWN DIAMOND REPORT**

December 31, 2022  
 IGI Report Number **LG563297479**  
 Description **LABORATORY GROWN  
DIAMOND**  
 Shape and Cutting Style **ROUND BRILLIANT**  
 Measurements **6.76 - 6.79 X 4.22 MM**

**GRADING RESULTS**

Carat Weight **1.20 CARAT**  
 Color Grade **E**  
 Clarity Grade **VVS 2**  
 Cut Grade **IDEAL**

**ADDITIONAL GRADING INFORMATION**

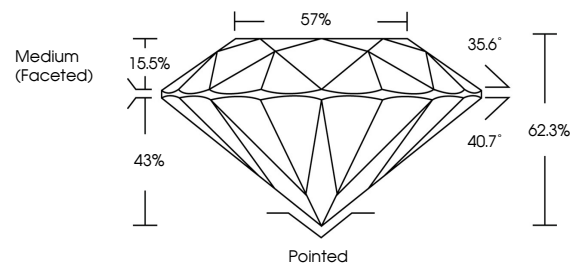
Polish **EXCELLENT**  
 Symmetry **EXCELLENT**  
 Fluorescence **NONE**  
 Inscription(s) **LABGROWN (LGI) LG563297479**

Comments: As Grown - No indication of post-growth treatment.  
 This Laboratory Grown Diamond was created by High Pressure High Temperature (HPHT) growth process.  
 Type II

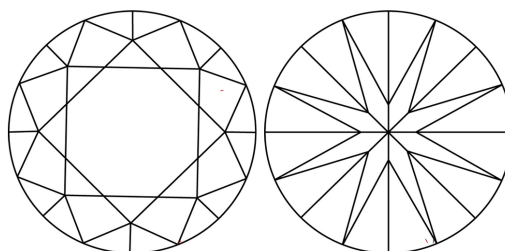
**LABORATORY GROWN DIAMOND REPORT**

**LG563297479**  
 Report verification at [igi.org](http://igi.org)

**PROPORTIONS**



**CLARITY CHARACTERISTICS**



**KEY TO SYMBOLS**

Red symbols indicate internal characteristics.  
 Green symbols indicate external characteristics.

**LABORATORY GROWN  
DIAMOND REPORT**

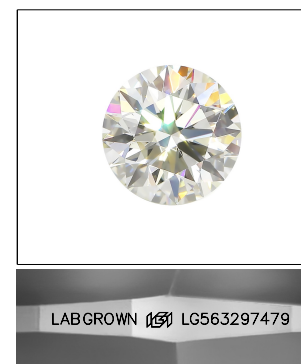
**GRADING SCALES**

**CLARITY**

IF	VVS <sup>1-2</sup>	VS <sup>1-2</sup>	SI <sup>1-2</sup>	I <sup>1-3</sup>
Internally Flawless	Very Very Slightly Included	Very Slightly Included	Slightly Included	Included

**COLOR**

D	E	F	G	H	I	J	Faint	Very Light	Light
---	---	---	---	---	---	---	-------	------------	-------

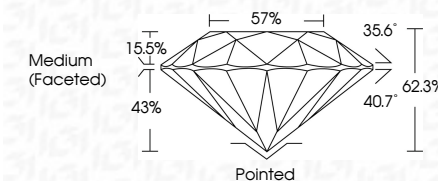


**LASERSCRIBE<sup>SM</sup>**

Sample Image Used

**LABORATORY GROWN DIAMOND REPORT**

December 31, 2022  
 IGI Report Number **LG563297479**  
 Description **LABORATORY GROWN  
DIAMOND**  
 Shape and Cutting Style **ROUND BRILLIANT**  
 Measurements **6.76 - 6.79 X 4.22 MM**  
**GRADING RESULTS**  
 Carat Weight **1.20 CARAT**  
 Color Grade **E**  
 Clarity Grade **VVS 2**  
 Cut Grade **IDEAL**



**ADDITIONAL GRADING INFORMATION**

Polish **EXCELLENT**  
 Symmetry **EXCELLENT**  
 Fluorescence **NONE**  
 Inscription(s) **LABGROWN (LGI) LG563297479**

Comments: As Grown - No indication of post-growth treatment.  
 This Laboratory Grown Diamond was created by High Pressure High Temperature (HPHT) growth process.  
 Type II



**IGI**

December 31, 2022	1.20 CARAT	E	VVS 2	IDEAL	62.3%	57%	Medium (Faceted)	Pointed	EXCELLENT	EXCELLENT	NONE	LABGROWN (LGI) LG563297479
IGI Report No LG563297479	Carat Weight	Color Grade	Clarity Grade	Cut Grade	Depth	Table	Grade	Culet	Polish	Symmetry	Fluorescence	Inscription(s)
ROUND BRILLIANT	6.76 - 6.79 X 4.22 MM	E	VVS 2	IDEAL	62.3%	57%	Medium (Faceted)	Pointed	EXCELLENT	EXCELLENT	NONE	LABGROWN (LGI) LG563297479

Comments: As Grown - No indication of post-growth treatment.  
 This Laboratory Grown Diamond was created by High Pressure High Temperature (HPHT) growth process.  
 Type II