



**INTERNATIONAL  
GEMOLOGICAL  
INSTITUTE**

**LABORATORY GROWN DIAMOND REPORT**

**IGI LABORATORY GROWN DIAMOND IDENTIFICATION REPORT**

January 18, 2023  
 IGI Report Number LG564354708  
 Description LABORATORY GROWN DIAMOND  
 Shape and Cutting Style ROUND BRILLIANT  
 Measurements 4.82 - 4.85 X 2.94 MM

**GRADING RESULTS**

Carat Weight 0.41 CARAT  
 Color Grade D  
 Clarity Grade INTERNALLY FLAWLESS  
 Cut Grade EXCELLENT

**ADDITIONAL GRADING INFORMATION**

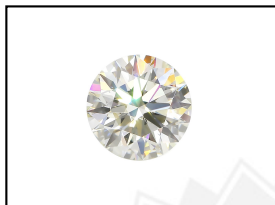
Polish EXCELLENT  
 Symmetry EXCELLENT  
 Fluorescence NONE  
 Inscription(s) LABGROWN (IGI) LG564354708

Comments: This Laboratory Grown Diamond was created by Chemical Vapor Deposition (CVD) growth process and may include post-growth treatment. Type IIa

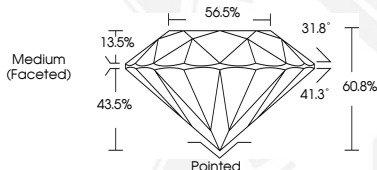
**ELECTRONIC COPY**

**LABORATORY GROWN  
DIAMOND REPORT**

**LG564354708**



**LASERSCRIBE<sup>SM</sup>**  
Sample Images Used



**IGI LABORATORY GROWN  
DIAMOND ID REPORT**

January 18, 2023  
 IGI Report Number **LG564354708**  
**ROUND BRILLIANT**  
**4.82 - 4.85 X 2.94 MM**  
 Carat Weight 0.41 CARAT  
 Color Grade D  
 Clarity Grade IF  
 Cut Grade EXCELLENT  
 Polish EXCELLENT  
 Symmetry EXCELLENT  
 Fluorescence NONE  
 Inscription(s) LABGROWN (IGI) LG564354708

Comments: This Laboratory Grown Diamond was created by Chemical Vapor Deposition (CVD) growth process and may include post-growth treatment. Type IIa

**IGI LABORATORY GROWN  
DIAMOND ID REPORT**

January 18, 2023  
 IGI Report Number **LG564354708**  
**ROUND BRILLIANT**  
**4.82 - 4.85 X 2.94 MM**  
 Carat Weight 0.41 CARAT  
 Color Grade D  
 Clarity Grade IF  
 Cut Grade EXCELLENT  
 Polish EXCELLENT  
 Symmetry EXCELLENT  
 Fluorescence NONE  
 Inscription(s) LABGROWN (IGI) LG564354708

Comments: This Laboratory Grown Diamond was created by Chemical Vapor Deposition (CVD) growth process and may include post-growth treatment. Type IIa

THIS DOCUMENT WAS PRODUCED WITH THE FOLLOWING SECURITY MEASURES: SPECIAL DOCUMENT PAPER, INK SCREENS, WATERMARK, BACKGROUND DESIGN, HOLOGRAM AND OTHER SECURITY FEATURES NOT LISTED AND DO EXCEED DOCUMENT SECURITY INDUSTRY GUIDELINES.

For terms & conditions and to verify this report, please visit [www.igi.org](http://www.igi.org)