



ELECTRONIC COPY

LABORATORY GROWN DIAMOND REPORT

| | |
|-------------------------|-----------------------------|
| January 16, 2023 | |
| IGI Report Number | LG564359674 |
| Description | LABORATORY GROWN DIAMOND |
| Shape and Cutting Style | ROUND BRILLIANT |
| Measurements | 9.72 - 9.78 X 6.03 MM |

GRADING RESULTS

| | |
|---------------|-------------|
| Carat Weight | 3.56 CARATS |
| Color Grade | H |
| Clarity Grade | VS 1 |
| Cut Grade | IDEAL |

ADDITIONAL GRADING INFORMATION

| | |
|--------------|-----------|
| Polish | EXCELLENT |
| Symmetry | EXCELLENT |
| Fluorescence | NONE |

Inscription(s) LABGROWN LG564359674

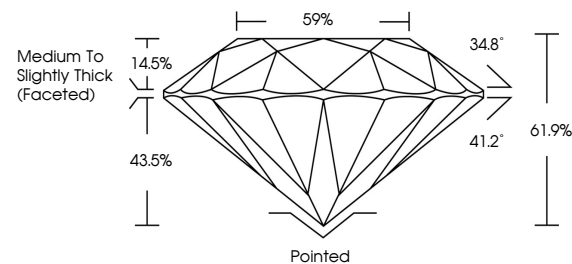
Comments: This Laboratory Grown Diamond was created by Chemical Vapor Deposition (CVD) growth process and may include post-growth treatment. Type IIa

LABORATORY GROWN DIAMOND REPORT

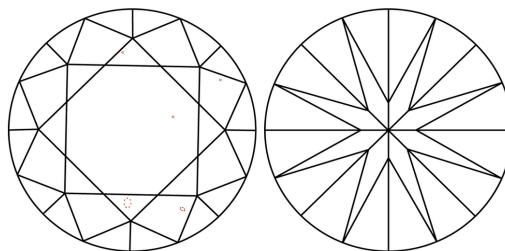
LG564359674

Report verification at igi.org

PROPORTIONS



CLARITY CHARACTERISTICS



KEY TO SYMBOLS

Red symbols indicate internal characteristics.
Green symbols indicate external characteristics.

LABORATORY GROWN
DIAMOND REPORT

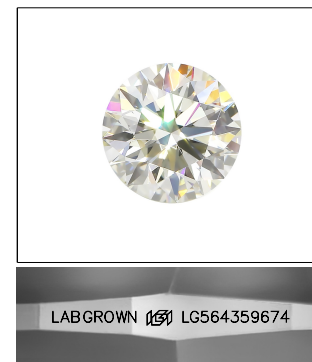
GRADING SCALES

CLARITY

| IF | VVS ¹⁻² | VS ¹⁻² | SI ¹⁻² | I ¹⁻³ |
|---------------------|-----------------------------|------------------------|-------------------|------------------|
| Internally Flawless | Very Very Slightly Included | Very Slightly Included | Slightly Included | Included |

COLOR

D E F G H I J Faint Very Light Light

LASERSCRIBESM

Sample Image Used



© IGI 2020, International Gemological Institute

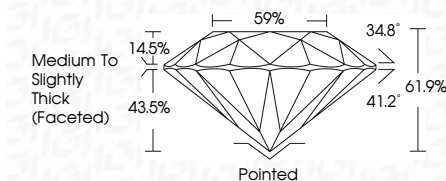
FD - 10 20

www.igi.org

LABORATORY GROWN DIAMOND REPORT

| | |
|-------------------------|-----------------------------|
| January 16, 2023 | |
| IGI Report Number | LG564359674 |
| Description | LABORATORY GROWN DIAMOND |
| Shape and Cutting Style | ROUND BRILLIANT |
| Measurements | 9.72 - 9.78 X 6.03 MM |

| GRADING RESULTS | |
|-----------------|-------------|
| Carat Weight | 3.56 CARATS |
| Color Grade | H |
| Clarity Grade | VS 1 |
| Cut Grade | IDEAL |



ADDITIONAL GRADING INFORMATION

| | |
|----------------|---------------------------|
| Polish | EXCELLENT |
| Symmetry | EXCELLENT |
| Fluorescence | NONE |
| Inscription(s) | LABGROWN (15) LG564359674 |

Comments: This Laboratory Grown Diamond was created by Chemical Vapor Deposition (CVD) growth process and may include post-growth treatment.
Type IIa



January 16, 2023
IGI Report No LG564359674
ROUND BRILLIANT

| | | | | | |
|-----------------------|--------------|---------------|------------------------------------|-------------|---|
| 9.72 - 9.78 X .603 MM | Color Grade | Clarity Grade | VS1 | 3.55 CARATS | H |
| | Depth | Cut Grade | IDEAL | | |
| | Table | | 61.9% | | |
| | Grade | | 59% | | |
| | | | Medium to Slightly Thick (Faceted) | | |
| | Quiet | Painted | | | |
| | Polish | EXCELLENT | | | |
| | Symmetry | EXCELLENT | | | |
| | Fluorescence | NONE | | | |
| | | LABGROWN/CL | | | |

Comments: This Laboratory Grown Diamond was created by Chemical Vapor Deposition (CVD) growth process and may include post-growth treatment.