



**ELECTRONIC COPY**

LABORATORY GROWN DIAMOND REPORT

LG564361055

Report verification at [igi.org](http://igi.org)

LABORATORY GROWN  
DIAMOND REPORT

LABORATORY GROWN DIAMOND REPORT

LABORATORY GROWN DIAMOND REPORT

January 16, 2023  
IGI Report Number **LG564361055**  
Description **LABORATORY GROWN  
DIAMOND**  
Shape and Cutting Style **ROUND BRILLIANT**  
Measurements **7.41 - 7.46 X 4.48 MM**

**GRADING RESULTS**

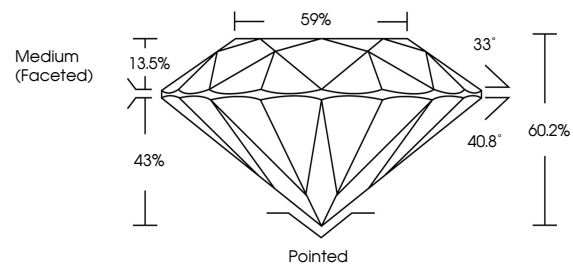
Carat Weight **1.52 CARAT**  
Color Grade **E**  
Clarity Grade **VVS 1**  
Cut Grade **IDEAL**

**ADDITIONAL GRADING INFORMATION**

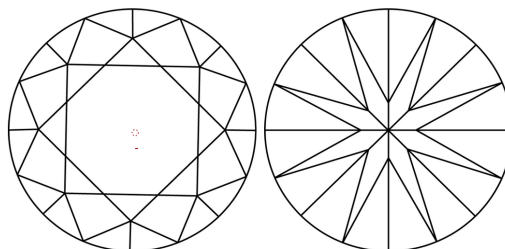
Polish **EXCELLENT**  
Symmetry **EXCELLENT**  
Fluorescence **NONE**  
Inscription(s) **LABGROWN (IGI) LG564361055**

Comments: As Grown - No indication of post-growth treatment.  
This Laboratory Grown Diamond was created by High Pressure High Temperature (HPHT) growth process.  
Type II

**PROPORTIONS**



**CLARITY CHARACTERISTICS**



**KEY TO SYMBOLS**

Red symbols indicate internal characteristics.  
Green symbols indicate external characteristics.

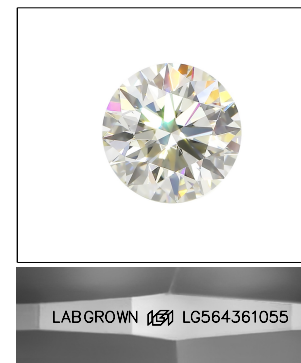
**GRADING SCALES**

**CLARITY**

| IF                  | VVS <sup>1-2</sup>          | VS <sup>1-2</sup>      | SI <sup>1-2</sup> | I <sup>1-3</sup> |
|---------------------|-----------------------------|------------------------|-------------------|------------------|
| Internally Flawless | Very Very Slightly Included | Very Slightly Included | Slightly Included | Included         |

**COLOR**

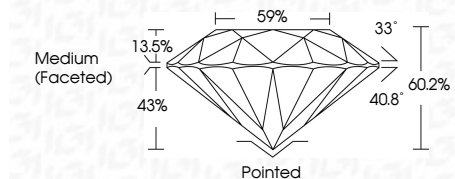
| D | E | F | G | H | I | J | Faint | Very Light | Light |
|---|---|---|---|---|---|---|-------|------------|-------|
|---|---|---|---|---|---|---|-------|------------|-------|



LASERSCRIBE<sup>SM</sup>

Sample Image Used

January 16, 2023  
IGI Report Number **LG564361055**  
Description **LABORATORY GROWN  
DIAMOND**  
Shape and Cutting Style **ROUND BRILLIANT**  
Measurements **7.41 - 7.46 X 4.48 MM**  
**GRADING RESULTS**  
Carat Weight **1.52 CARAT**  
Color Grade **E**  
Clarity Grade **VVS 1**  
Cut Grade **IDEAL**



**ADDITIONAL GRADING INFORMATION**

Polish **EXCELLENT**  
Symmetry **EXCELLENT**  
Fluorescence **NONE**  
Inscription(s) **LABGROWN (IGI) LG564361055**  
Comments: As Grown - No indication of post-growth treatment.  
This Laboratory Grown Diamond was created by High Pressure High Temperature (HPHT) growth process.  
Type II



**IGI**



|                  |                           |                 |            |       |       |       |        |          |                  |                 |           |  |  |                            |
|------------------|---------------------------|-----------------|------------|-------|-------|-------|--------|----------|------------------|-----------------|-----------|--|--|----------------------------|
| January 16, 2023 | IGI Report No LG564361055 | ROUND BRILLIANT | 1.52 CARAT | E     | VVS 1 | IDEAL | 60.2%  | 59%      | Medium (Faceted) | Pointed         | EXCELLENT | EXCELLENT  | NONE   | LABGROWN (IGI) LG564361055 |
| Carat Weight     | Color Grade               | Clarity Grade   | Depth      | Table | Grade | Culet | Polish | Symmetry | Fluorescence     | Inscriptions(s) | Comments: | As Grown - No indication of post-growth treatment. | This Laboratory Grown Diamond was created by High Pressure High Temperature (HPHT) growth process. | Type II                    |