



ELECTRONIC COPY

LABORATORY GROWN DIAMOND REPORT

January 16, 2023
IGI Report Number LG564367866
Description LABORATORY GROWN DIAMOND
Shape and Cutting Style ROUND BRILLIANT
Measurements 7.69 - 7.73 X 4.66 MM

GRADING RESULTS

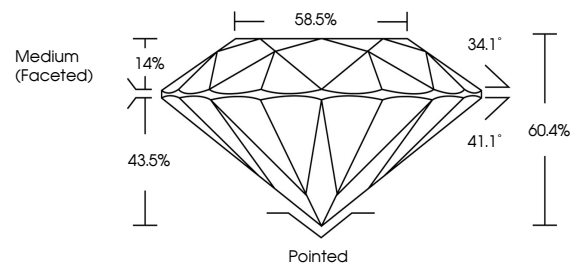
Carat Weight 1.67 CARAT
Color Grade E
Clarity Grade VS 2
Cut Grade IDEAL

ADDITIONAL GRADING INFORMATION

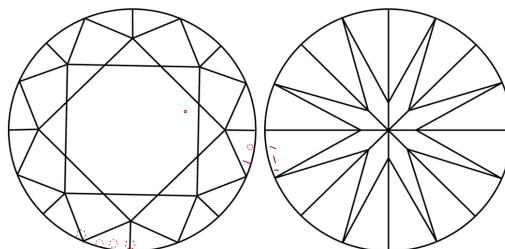
Polish EXCELLENT
Symmetry EXCELLENT
Fluorescence NONE
Inscription(s) LABGROWN (IGI) LG564367866

Comments: HEARTS & ARROWS
This Laboratory Grown Diamond was created by Chemical Vapor Deposition (CVD) growth process and may include post-growth treatment. Type IIa

PROPORTIONS



CLARITY CHARACTERISTICS



KEY TO SYMBOLS

Red symbols indicate internal characteristics.
Green symbols indicate external characteristics.



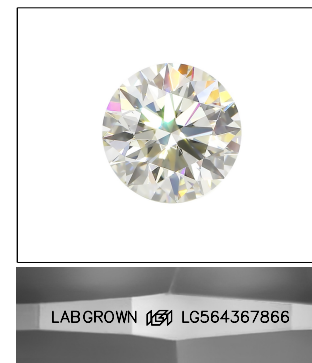
GRADING SCALES

CLARITY

Table mapping clarity grades: IF (Internally Flawless), VVS 1-2 (Very Very Slightly Included), VS 1-2 (Very Slightly Included), SI 1-2 (Slightly Included), I 1-3 (Included).

COLOR

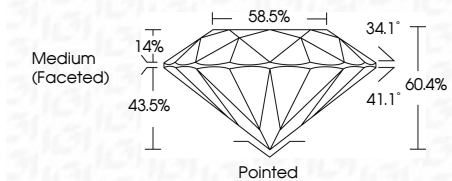
Table mapping color grades: D, E, F, G, H, I, J, Faint, Very Light, Light.



LASERSCRIBE SM

Sample Image Used

January 16, 2023
IGI Report Number LG564367866
Description LABORATORY GROWN DIAMOND
Shape and Cutting Style ROUND BRILLIANT
Measurements 7.69 - 7.73 X 4.66 MM
GRADING RESULTS
Carat Weight 1.67 CARAT
Color Grade E
Clarity Grade VS 2
Cut Grade IDEAL



ADDITIONAL GRADING INFORMATION

Polish EXCELLENT
Symmetry EXCELLENT
Fluorescence NONE
Inscription(s) LABGROWN (IGI) LG564367866

Comments: HEARTS & ARROWS
This Laboratory Grown Diamond was created by Chemical Vapor Deposition (CVD) growth process and may include post-growth treatment. Type IIa



IGI

January 16, 2023
IGI Report No LG564367866
ROUND BRILLIANT
7.69 - 7.73 X 4.66 MM
1.67 CARAT
E
VS 2
IDEAL
60.4%
58.5%
Medium (Faceted)
Pointed
EXCELLENT
EXCELLENT
NONE
LABGROWN (IGI) LG564367866
Comments: HEARTS & ARROWS
This Laboratory Grown Diamond was created by Chemical Vapor Deposition (CVD) growth process and may include post-growth treatment. Type IIa