



ELECTRONIC COPY

LABORATORY GROWN DIAMOND REPORT

LG564373681

Report verification at igi.org

**LABORATORY GROWN
DIAMOND REPORT**

LABORATORY GROWN DIAMOND REPORT

LABORATORY GROWN DIAMOND REPORT

January 20, 2023
 IGI Report Number **LG564373681**
 Description **LABORATORY GROWN
DIAMOND**
 Shape and Cutting Style **SQUARE CUSHION BRILLIANT**
 Measurements **10.08 X 9.89 X 6.60 MM**

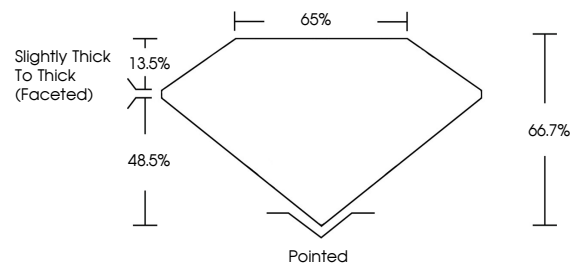
GRADING RESULTS

Carat Weight **5.13 CARATS**
 Color Grade **F**
 Clarity Grade **VS 1**

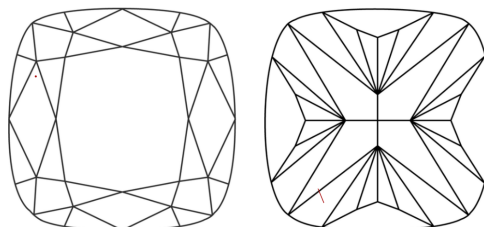
ADDITIONAL GRADING INFORMATION

Polish **EXCELLENT**
 Symmetry **EXCELLENT**
 Fluorescence **NONE**
 Inscription(s) **LABGROWN (LGR) LG564373681**
 Comments: This Laboratory Grown Diamond was created by Chemical Vapor Deposition (CVD) growth process and may include post-growth treatment. Type IIa

PROPORTIONS



CLARITY CHARACTERISTICS



KEY TO SYMBOLS

Red symbols indicate internal characteristics.
 Green symbols indicate external characteristics.

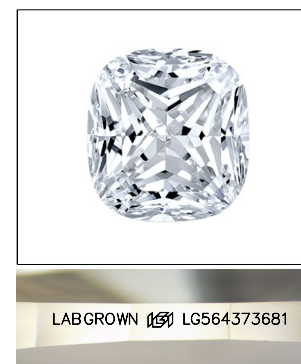
GRADING SCALES

CLARITY

IF	VVS ¹⁻²	VS ¹⁻²	SI ¹⁻²	I ¹⁻³
Internally Flawless	Very Very Slightly Included	Very Slightly Included	Slightly Included	Included

COLOR

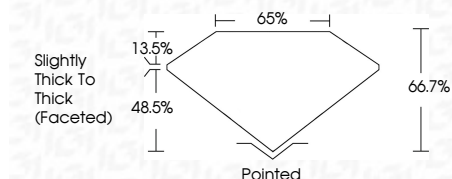
D	E	F	G	H	I	J	Faint	Very Light	Light
---	---	---	---	---	---	---	-------	------------	-------



LASERSCRIBESM

Sample Image Used

January 20, 2023
 IGI Report Number **LG564373681**
 Description **LABORATORY GROWN
DIAMOND**
 Shape and Cutting Style **SQUARE CUSHION BRILLIANT**
 Measurements **10.08 X 9.89 X 6.60 MM**
GRADING RESULTS
 Carat Weight **5.13 CARATS**
 Color Grade **F**
 Clarity Grade **VS 1**



ADDITIONAL GRADING INFORMATION

Polish **EXCELLENT**
 Symmetry **EXCELLENT**
 Fluorescence **NONE**
 Inscription(s) **LABGROWN (LGR) LG564373681**
 Comments: This Laboratory Grown Diamond was created by Chemical Vapor Deposition (CVD) growth process and may include post-growth treatment. Type IIa



IGI

January 20, 2023
 IGI Report No LG564373681
SQUARE CUSHION BRILLIANT
 10.08 X 9.89 X 6.60 MM
 Carat Weight **5.13 CARATS**
 Color Grade **F**
 Clarity Grade **VS 1**
 Depth **66.7%**
 Table **65%**
 Girdle **Slightly Thick To Thick (Faceted)**
 Culet **Pointed**
 Polish **EXCELLENT**
 Symmetry **EXCELLENT**
 Fluorescence **NONE**
 Inscription(s) **LABGROWN (LGR) LG564373681**

Comments: This Laboratory Grown Diamond was created by Chemical Vapor Deposition (CVD) growth process and may include post-growth treatment. Type IIa