



**INTERNATIONAL  
GEMOLOGICAL  
INSTITUTE**

**ELECTRONIC COPY**

**LABORATORY GROWN  
DIAMOND REPORT**

**LG564375903**

**IGI LABORATORY GROWN  
DIAMOND ID REPORT**

January 23, 2023  
IGI Report Number **LG564375903**  
**ROUND BRILLIANT**  
**5.00 - 5.08 X 3.07 MM**  
Carat Weight 0.50 CARAT  
Color Grade D  
Clarity Grade VVS 1  
Cut Grade VERY GOOD  
Polish VERY GOOD  
Symmetry VERY GOOD  
Fluorescence NONE  
Inscription(s) LABGROWN (IGI) LG564375903

Comments: As Grown - No indication of post-growth treatment. This Laboratory Grown Diamond was created by High Pressure High Temperature (HPHT) growth process. Type II

**LABORATORY GROWN DIAMOND REPORT**

**IGI LABORATORY GROWN DIAMOND IDENTIFICATION REPORT**

January 23, 2023  
IGI Report Number LG564375903  
Description LABORATORY GROWN DIAMOND  
Shape and Cutting Style ROUND BRILLIANT  
Measurements 5.00 - 5.08 X 3.07 MM

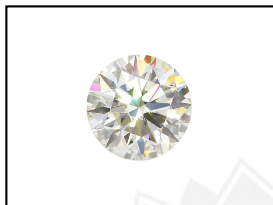
**GRADING RESULTS**

Carat Weight 0.50 CARAT  
Color Grade D  
Clarity Grade VVS 1  
Cut Grade VERY GOOD

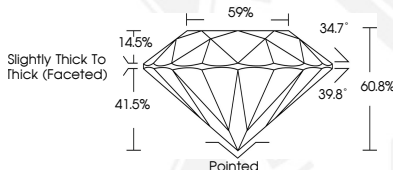
**ADDITIONAL GRADING INFORMATION**

Polish VERY GOOD  
Symmetry VERY GOOD  
Fluorescence NONE  
Inscription(s) LABGROWN (IGI) LG564375903

Comments: As Grown - No indication of post-growth treatment. This Laboratory Grown Diamond was created by High Pressure High Temperature (HPHT) growth process. Type II



**LASERSCRIBE<sup>SM</sup>**  
Sample Images Used



**IGI LABORATORY GROWN  
DIAMOND ID REPORT**

January 23, 2023  
IGI Report Number **LG564375903**  
**ROUND BRILLIANT**  
**5.00 - 5.08 X 3.07 MM**  
Carat Weight 0.50 CARAT  
Color Grade D  
Clarity Grade VVS 1  
Cut Grade VERY GOOD  
Polish VERY GOOD  
Symmetry VERY GOOD  
Fluorescence NONE  
Inscription(s) LABGROWN (IGI) LG564375903

Comments: As Grown - No indication of post-growth treatment. This Laboratory Grown Diamond was created by High Pressure High Temperature (HPHT) growth process. Type II

THIS DOCUMENT WAS PRODUCED WITH THE FOLLOWING SECURITY MEASURES: SPECIAL DOCUMENT PAPER, INK SCREENS, WATERMARK, BACKGROUND DESIGN, HOLOGRAM AND OTHER SECURITY FEATURES NOT LISTED AND DO EXCEED DOCUMENT SECURITY INDUSTRY GUIDELINES.

For terms & conditions and to verify this report, please visit [www.igi.org](http://www.igi.org)