



ELECTRONIC COPY

LABORATORY GROWN DIAMOND REPORT

LG564385670

Report verification at igi.org

LABORATORY GROWN
DIAMOND REPORT

LABORATORY GROWN DIAMOND REPORT

LABORATORY GROWN DIAMOND REPORT

January 21, 2023
IGI Report Number **LG564385670**
Description **LABORATORY GROWN
DIAMOND**
Shape and Cutting Style **SQUARE CUSHION BRILLIANT**
Measurements **11.07 X 11.01 X 7.48 MM**

GRADING RESULTS

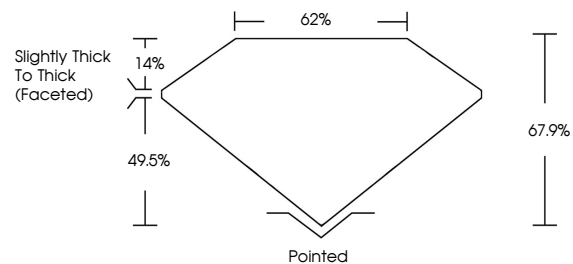
Carat Weight **7.12 CARATS**
Color Grade **G**
Clarity Grade **VS 2**

ADDITIONAL GRADING INFORMATION

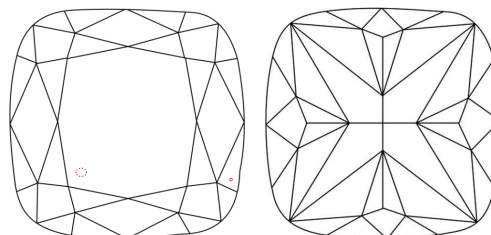
Polish **EXCELLENT**
Symmetry **EXCELLENT**
Fluorescence **NONE**
Inscription(s) **LABGROWN (L) LG564385670**

Comments: This Laboratory Grown Diamond was created by Chemical Vapor Deposition (CVD) growth process and may include post-growth treatment. Type IIa

PROPORTIONS



CLARITY CHARACTERISTICS



KEY TO SYMBOLS

Red symbols indicate internal characteristics.
Green symbols indicate external characteristics.

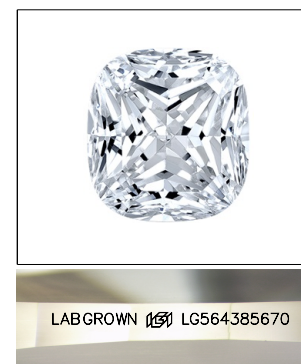
GRADING SCALES

CLARITY

IF	VVS ¹⁻²	VS ¹⁻²	SI ¹⁻²	I ¹⁻³
Internally Flawless	Very Very Slightly Included	Very Slightly Included	Slightly Included	Included

COLOR

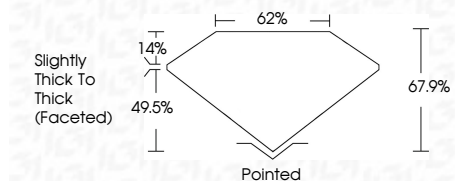
D	E	F	G	H	I	J	Faint	Very Light	Light
---	---	---	---	---	---	---	-------	------------	-------



LASERSCRIBESM

Sample Image Used

January 21, 2023
IGI Report Number **LG564385670**
Description **LABORATORY GROWN
DIAMOND**
Shape and Cutting Style **SQUARE CUSHION BRILLIANT**
Measurements **11.07 X 11.01 X 7.48 MM**
GRADING RESULTS
Carat Weight **7.12 CARATS**
Color Grade **G**
Clarity Grade **VS 2**



ADDITIONAL GRADING INFORMATION

Polish **EXCELLENT**
Symmetry **EXCELLENT**
Fluorescence **NONE**
Inscription(s) **LABGROWN (L) LG564385670**

Comments: This Laboratory Grown Diamond was created by Chemical Vapor Deposition (CVD) growth process and may include post-growth treatment. Type IIa



IGI

January 21, 2023
IGI Report No LG564385670
SQUARE CUSHION BRILLIANT
11.07 X 11.01 X 7.48 MM
7.12 CARATS
G
VS 2
67.9%
62%
Slightly Thick To Thick (Faceted)
Pointed
EXCELLENT
EXCELLENT
NONE
LABGROWN (L) LG564385670

Comments: This Laboratory Grown Diamond was created by Chemical Vapor Deposition (CVD) growth process and may include post-growth treatment. Type IIa