



ELECTRONIC COPY

LABORATORY GROWN DIAMOND REPORT

January 22, 2023
 IGI Report Number **LG566303202**
 Description **LABORATORY GROWN
DIAMOND**
 Shape and Cutting Style **HEART BRILLIANT**
 Measurements **7.93 X 8.88 X 5.06 MM**

GRADING RESULTS

Carat Weight **2.00 CARATS**
 Color Grade **G**
 Clarity Grade **VS 2**

ADDITIONAL GRADING INFORMATION

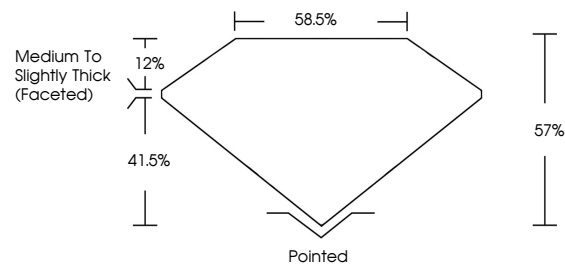
Polish **EXCELLENT**
 Symmetry **EXCELLENT**
 Fluorescence **NONE**

Inscription(s) **LABGROWN (LGI) LG566303202**
 Comments: This Laboratory Grown Diamond was created by Chemical Vapor Deposition (CVD) growth process and may include post-growth treatment. Type IIa

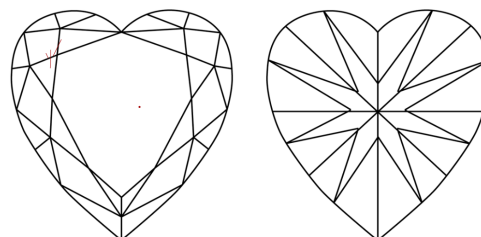
LABORATORY GROWN DIAMOND REPORT

LG566303202
 Report verification at igi.org

PROPORTIONS



CLARITY CHARACTERISTICS



KEY TO SYMBOLS

Red symbols indicate internal characteristics.
 Green symbols indicate external characteristics.

**LABORATORY GROWN
DIAMOND REPORT**

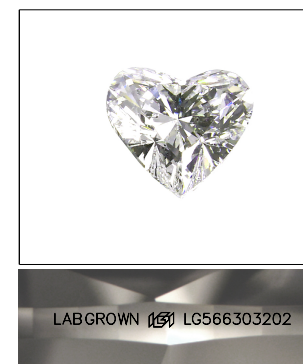
GRADING SCALES

CLARITY

IF	VVS ¹⁻²	VS ¹⁻²	SI ¹⁻²	I ¹⁻³
Internally Flawless	Very Very Slightly Included	Very Slightly Included	Slightly Included	Included

COLOR

D	E	F	G	H	I	J	Faint	Very Light	Light
---	---	---	---	---	---	---	-------	------------	-------

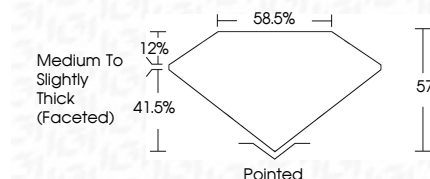


LASERSCRIBESM

Sample Image Used

LABORATORY GROWN DIAMOND REPORT

January 22, 2023
 IGI Report Number **LG566303202**
 Description **LABORATORY GROWN
DIAMOND**
 Shape and Cutting Style **HEART BRILLIANT**
 Measurements **7.93 X 8.88 X 5.06 MM**
GRADING RESULTS
 Carat Weight **2.00 CARATS**
 Color Grade **G**
 Clarity Grade **VS 2**



ADDITIONAL GRADING INFORMATION

Polish **EXCELLENT**
 Symmetry **EXCELLENT**
 Fluorescence **NONE**
 Inscription(s) **LABGROWN (LGI) LG566303202**

Comments: This Laboratory Grown Diamond was created by Chemical Vapor Deposition (CVD) growth process and may include post-growth treatment. Type IIa



January 22, 2023
 IGI Report No **LG566303202**
HEART BRILLIANT
7.93 X 8.88 X 5.06 MM
 Carat Weight **2.00 CARATS**
 Color Grade **G**
 Clarity Grade **VS 2**
 Depth **57%**
 Table **58.5%**
 Girdle **Medium to Slightly Thick (Faceted)**
 Culet **Pointed**
 Polish **EXCELLENT**
 Symmetry **EXCELLENT**
 Fluorescence **NONE**
 Inscription(s) **LASERSCRIBE (LGI) LG566303202**
 Comments: This Laboratory Grown Diamond was created by Chemical Vapor Deposition (CVD) growth process and may include post-growth treatment. Type IIa