



**INTERNATIONAL  
GEMOLOGICAL  
INSTITUTE**

**ELECTRONIC COPY**

**LABORATORY GROWN  
DIAMOND REPORT**

**LG566317169**

**IGI LABORATORY GROWN  
DIAMOND ID REPORT**

February 16, 2023  
IGI Report Number **LG566317169**  
**EMERALD CUT**  
**4.65 X 3.34 X 2.43 MM**  
Carat Weight 0.34 CARAT  
Color Grade FANCY VIVID BLUE  
Clarity Grade VS 2  
Polish VERY GOOD  
Symmetry VERY GOOD  
Fluorescence NONE  
Inscription(s) LG566317169

Comments: This Laboratory Grown Diamond was created by Chemical Vapor Deposition (CVD) growth process. Indications of post-growth treatment.

**LABORATORY GROWN DIAMOND REPORT**

**IGI LABORATORY GROWN DIAMOND IDENTIFICATION REPORT**

February 16, 2023  
IGI Report Number LG566317169  
Description LABORATORY GROWN DIAMOND  
Shape and Cutting Style EMERALD CUT  
Measurements 4.65 X 3.34 X 2.43 MM

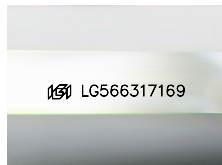
**GRADING RESULTS**

Carat Weight 0.34 CARAT  
Color Grade FANCY VIVID BLUE  
Clarity Grade VS 2

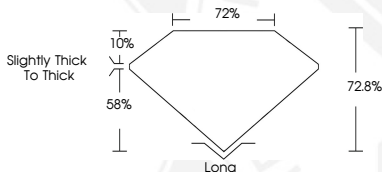
**ADDITIONAL GRADING INFORMATION**

Polish VERY GOOD  
Symmetry VERY GOOD  
Fluorescence NONE  
Inscription(s) LG566317169

Comments: This Laboratory Grown Diamond was created by Chemical Vapor Deposition (CVD) growth process. Indications of post-growth treatment.



Sample Image Used



**IGI LABORATORY GROWN  
DIAMOND ID REPORT**

February 16, 2023  
IGI Report Number **LG566317169**  
**EMERALD CUT**  
**4.65 X 3.34 X 2.43 MM**  
Carat Weight 0.34 CARAT  
Color Grade FANCY VIVID BLUE  
Clarity Grade VS 2  
Polish VERY GOOD  
Symmetry VERY GOOD  
Fluorescence NONE  
Inscription(s) LG566317169

Comments: This Laboratory Grown Diamond was created by Chemical Vapor Deposition (CVD) growth process. Indications of post-growth treatment.



THIS DOCUMENT WAS PRODUCED WITH THE FOLLOWING SECURITY MEASURES: SPECIAL DOCUMENT PAPER, INK SCREENS, WATERMARK, BACKGROUND DESIGN, HOLOGRAM AND OTHER SECURITY FEATURES NOT LISTED AND DO EXCEED DOCUMENT SECURITY INDUSTRY GUIDELINES.

For terms & conditions and to verify this report, please visit [www.igi.org](http://www.igi.org)