



ELECTRONIC COPY

LABORATORY GROWN DIAMOND REPORT

January 27, 2023
IGI Report Number LG566329452
Description LABORATORY GROWN DIAMOND
Shape and Cutting Style ROUND BRILLIANT
Measurements 6.60 - 6.65 X 4.10 MM

GRADING RESULTS

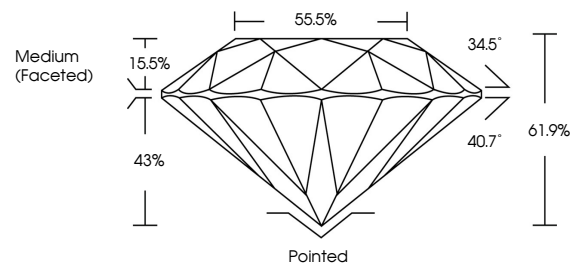
Carat Weight 1.09 CARAT
Color Grade D
Clarity Grade VS 1
Cut Grade IDEAL

ADDITIONAL GRADING INFORMATION

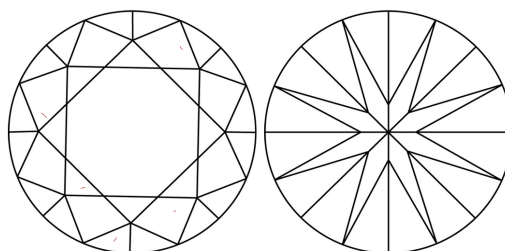
Polish EXCELLENT
Symmetry EXCELLENT
Fluorescence NONE
Inscription(s) LABGROWN (IGI) LG566329452

Comments: As Grown - No indication of post-growth treatment. This Laboratory Grown Diamond was created by High Pressure High Temperature (HPHT) growth process. Type II

PROPORTIONS



CLARITY CHARACTERISTICS



KEY TO SYMBOLS

Red symbols indicate internal characteristics. Green symbols indicate external characteristics.

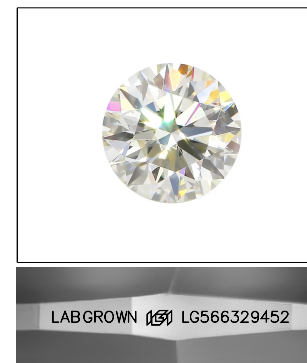
GRADING SCALES

CLARITY

Table mapping clarity grades: IF (Internally Flawless), VVS 1-2 (Very Very Slightly Included), VS 1-2 (Very Slightly Included), SI 1-2 (Slightly Included), I 1-3 (Included).

COLOR

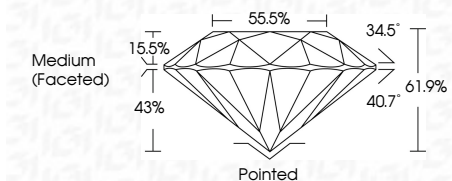
Table mapping color grades: D, E, F, G, H, I, J, Faint, Very Light, Light.



LASERSCRIBE SM

Sample Image Used

January 27, 2023
IGI Report Number LG566329452
Description LABORATORY GROWN DIAMOND
Shape and Cutting Style ROUND BRILLIANT
Measurements 6.60 - 6.65 X 4.10 MM
GRADING RESULTS
Carat Weight 1.09 CARAT
Color Grade D
Clarity Grade VS 1
Cut Grade IDEAL



ADDITIONAL GRADING INFORMATION

Polish EXCELLENT
Symmetry EXCELLENT
Fluorescence NONE
Inscription(s) LABGROWN (IGI) LG566329452

Comments: As Grown - No indication of post-growth treatment. This Laboratory Grown Diamond was created by High Pressure High Temperature (HPHT) growth process. Type II



IGI



Summary table of diamond characteristics: January 27, 2023, IGI Report No. LG566329452, ROUND BRILLIANT, 6.60 - 6.65 X 4.10 MM, 1.09 CARAT, D, VS 1, IDEAL, 61.9%, 55.5%, Medium (Faceted), Pointed, EXCELLENT, EXCELLENT, NONE, LABGROWN (IGI) LG566329452.

Comments: As Grown - No indication of post-growth treatment. This Laboratory Grown Diamond was created by High Pressure High Temperature (HPHT) growth process. Type II