



ELECTRONIC COPY

LABORATORY GROWN DIAMOND REPORT

January 31, 2023
 IGI Report Number **LG566331346**
 Description **LABORATORY GROWN
DIAMOND**
 Shape and Cutting Style **HEART BRILLIANT**
 Measurements **8.80 X 9.99 X 5.74 MM**

GRADING RESULTS

Carat Weight **3.00 CARATS**
 Color Grade **G**
 Clarity Grade **VS 1**

ADDITIONAL GRADING INFORMATION

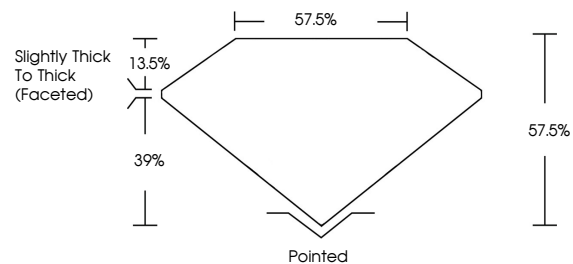
Polish **EXCELLENT**
 Symmetry **EXCELLENT**
 Fluorescence **NONE**

Inscription(s) **LABGROWN (LGI) LG566331346**
 Comments: This Laboratory Grown Diamond was created by Chemical Vapor Deposition (CVD) growth process and may include post-growth treatment. Type IIa

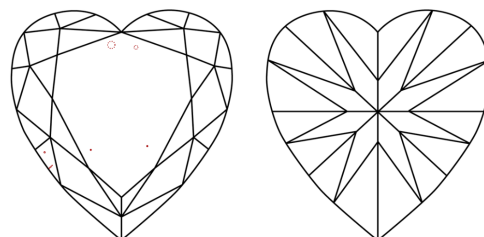
LABORATORY GROWN DIAMOND REPORT

LG566331346
 Report verification at igi.org

PROPORTIONS



CLARITY CHARACTERISTICS



KEY TO SYMBOLS

Red symbols indicate internal characteristics.
 Green symbols indicate external characteristics.

**LABORATORY GROWN
DIAMOND REPORT**

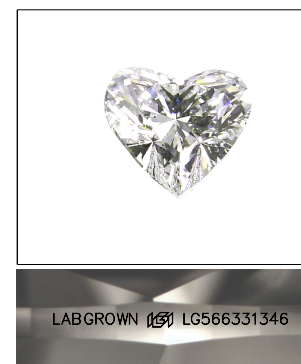
GRADING SCALES

CLARITY

IF	VVS ¹⁻²	VS ¹⁻²	SI ¹⁻²	I ¹⁻³
Internally Flawless	Very Very Slightly Included	Very Slightly Included	Slightly Included	Included

COLOR

D	E	F	G	H	I	J	Faint	Very Light	Light
---	---	---	---	---	---	---	-------	------------	-------

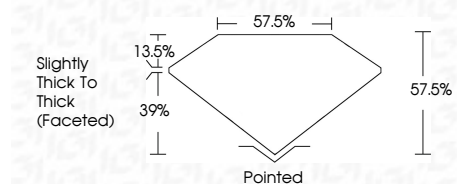


LASERSCRIBESM

Sample Image Used

LABORATORY GROWN DIAMOND REPORT

January 31, 2023
 IGI Report Number **LG566331346**
 Description **LABORATORY GROWN
DIAMOND**
 Shape and Cutting Style **HEART BRILLIANT**
 Measurements **8.80 X 9.99 X 5.74 MM**
GRADING RESULTS
 Carat Weight **3.00 CARATS**
 Color Grade **G**
 Clarity Grade **VS 1**



ADDITIONAL GRADING INFORMATION

Polish **EXCELLENT**
 Symmetry **EXCELLENT**
 Fluorescence **NONE**
 Inscription(s) **LABGROWN (LGI) LG566331346**

Comments: This Laboratory Grown Diamond was created by Chemical Vapor Deposition (CVD) growth process and may include post-growth treatment. Type IIa



January 31, 2023	3.00 CARATS	G	VS 1	Pointed
IGI Report No LG566331346	8.80 X 9.99 X 5.74 MM	57.5%	57.5%	EXCELLENT
HEART BRILLIANT	Carat Weight	Color Grade	Clarity Grade	Symmetry
	8.80 X 9.99 X 5.74 MM	G	VS 1	EXCELLENT
	Color Grade		Depth	Fluorescence
			57.5%	NONE
	Clarity Grade		Table	Inscription(s)
	VS 1		57.5%	LABGROWN (LGI) LG566331346
			Grades	
			Slightly Thick To Thick (Faceted)	
			Culet	
			None	
			Polish	
			EXCELLENT	
			Symmetry	
			EXCELLENT	
			Fluorescence	
			NONE	
			Inscription(s)	
			LABGROWN (LGI) LG566331346	

Comments: This Laboratory Grown Diamond was created by Chemical Vapor Deposition (CVD) growth process and may include post-growth treatment. Type IIa