



**ELECTRONIC COPY**

**LABORATORY GROWN DIAMOND REPORT**

January 31, 2023  
 IGI Report Number **LG566333444**  
 Description **LABORATORY GROWN  
DIAMOND**  
 Shape and Cutting Style **ROUND BRILLIANT**  
 Measurements **6.85 - 6.88 X 4.16 MM**

**GRADING RESULTS**

Carat Weight **1.21 CARAT**  
 Color Grade **D**  
 Clarity Grade **VVS 2**  
 Cut Grade **IDEAL**

**ADDITIONAL GRADING INFORMATION**

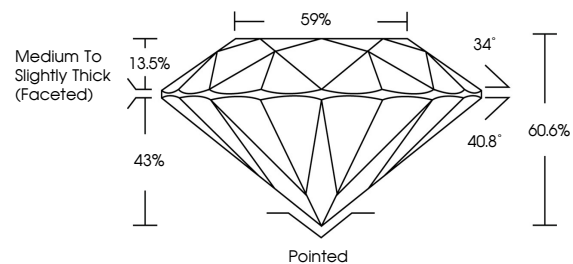
Polish **EXCELLENT**  
 Symmetry **EXCELLENT**  
 Fluorescence **NONE**  
 Inscription(s) **LABGROWN (IGI) LG566333444**

Comments: As Grown - No indication of post-growth treatment.  
 This Laboratory Grown Diamond was created by High Pressure High Temperature (HPHT) growth process.  
 Type II

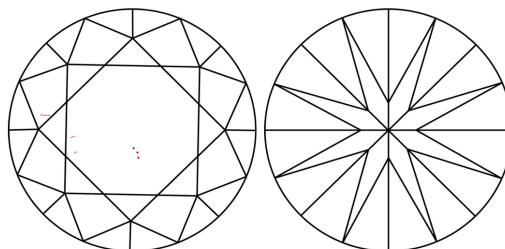
**LABORATORY GROWN DIAMOND REPORT**

**LG566333444**  
 Report verification at igi.org

**PROPORTIONS**



**CLARITY CHARACTERISTICS**



**KEY TO SYMBOLS**

Red symbols indicate internal characteristics.  
 Green symbols indicate external characteristics.

**LABORATORY GROWN  
DIAMOND REPORT**

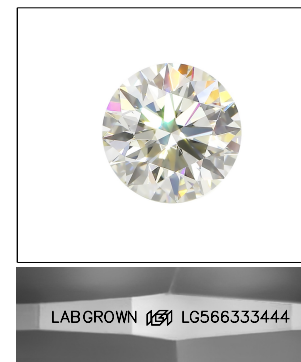
**GRADING SCALES**

**CLARITY**

| IF                  | VVS <sup>1-2</sup>          | VS <sup>1-2</sup>      | SI <sup>1-2</sup> | I <sup>1-3</sup> |
|---------------------|-----------------------------|------------------------|-------------------|------------------|
| Internally Flawless | Very Very Slightly Included | Very Slightly Included | Slightly Included | Included         |

**COLOR**

| D | E | F | G | H | I | J | Faint | Very Light | Light |
|---|---|---|---|---|---|---|-------|------------|-------|
|---|---|---|---|---|---|---|-------|------------|-------|

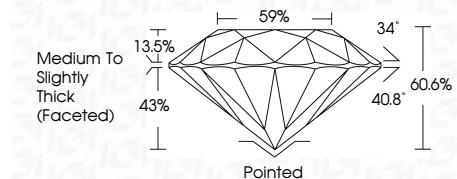


**LASERSCRIBE<sup>SM</sup>**

Sample Image Used

**LABORATORY GROWN DIAMOND REPORT**

January 31, 2023  
 IGI Report Number **LG566333444**  
 Description **LABORATORY GROWN  
DIAMOND**  
 Shape and Cutting Style **ROUND BRILLIANT**  
 Measurements **6.85 - 6.88 X 4.16 MM**  
**GRADING RESULTS**  
 Carat Weight **1.21 CARAT**  
 Color Grade **D**  
 Clarity Grade **VVS 2**  
 Cut Grade **IDEAL**



**ADDITIONAL GRADING INFORMATION**

Polish **EXCELLENT**  
 Symmetry **EXCELLENT**  
 Fluorescence **NONE**  
 Inscription(s) **LABGROWN (IGI) LG566333444**  
 Comments: As Grown - No indication of post-growth treatment.  
 This Laboratory Grown Diamond was created by High Pressure High Temperature (HPHT) growth process.  
 Type II



|                           |                       |             |               |           |       |       |                                    |         |           |           |              |                            |
|---------------------------|-----------------------|-------------|---------------|-----------|-------|-------|------------------------------------|---------|-----------|-----------|--------------|----------------------------|
| January 31, 2023          | 1.21 CARAT            | D           | VVS 2         | IDEAL     | 60.6% | 59%   | Medium To Slightly Thick (Faceted) | Pointed | EXCELLENT | EXCELLENT | NONE         | LABGROWN (IGI) LG566333444 |
| IGI Report No LG566333444 | Carat Weight          | Color Grade | Clarity Grade | Cut Grade | Depth | Table | Grade                              | Culet   | Polish    | Symmetry  | Fluorescence | Inscriptions(s)            |
| ROUND BRILLIANT           | 6.85 - 6.88 X 4.16 MM | D           | VVS 2         | IDEAL     | 60.6% | 59%   | Medium To Slightly Thick (Faceted) | Pointed | EXCELLENT | EXCELLENT | NONE         | LABGROWN (IGI) LG566333444 |

Comments: As Grown - No indication of post-growth treatment.  
 This Laboratory Grown Diamond was created by High Pressure High Temperature (HPHT) growth process.  
 Type II