



**ELECTRONIC COPY**

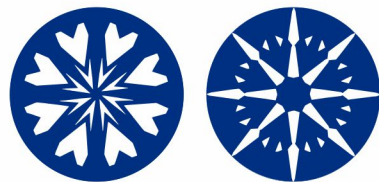
## LABORATORY GROWN DIAMOND REPORT

February 9, 2023	
IGI Report Number	LG566335541
Description	LABORATORY GROWN DIAMOND
Shape and Cutting Style	ROUND BRILLIANT
Measurements	8.27 - 8.30 X 5.09 MM
<b>GRADING RESULTS</b>	
Carat Weight	2.14 CARATS
Color Grade	F
Clarity Grade	VS 1
Cut Grade	IDEAL

### ADDITIONAL GRADING INFORMATION

Polish	EXCELLENT
Symmetry	EXCELLENT
Fluorescence	NONE
Inscription(s)	151 LG566335541

Comments: HEARTS & ARROWS  
This Laboratory Grown Diamond was created by  
Chemical Vapor Deposition (CVD) growth process and  
may include post-growth treatment.  
Type IIa

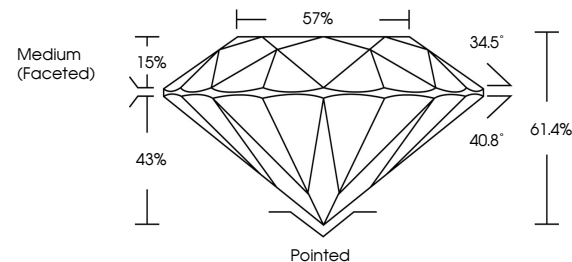


LABORATORY GROWN DIAMOND REPORT

LG566335541

Report verification at [igi.org](http://igi.org)

## PROPORTIONS



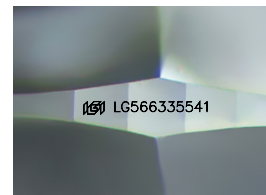
## GRADING SCALES

## CLARITY

IF	VVS <sup>1-2</sup>	VS <sup>1-2</sup>	SI <sup>1-2</sup>	I <sup>1-3</sup>
Internally Flawless	Very Very Slightly Included	Very Slightly Included	Slightly Included	Included

**COLOR**

D E F G H I J Faint Very Light Light



Sample Image Used



© IGI 2020, International Gemological Institute

FD - 10 20



THIS DOCUMENT WAS PRODUCED WITH THE FOLLOWING SECURITY MEASURES: SPECIAL DOCUMENT PAPER, INK SCREENS, WATERMARK, BACKGROUND DESIGNS, HOLOGRAM AND OTHER SECURITY FEATURES NOT LISTED AND DO EXCEED DOCUMENT SECURITY INDUSTRY GUIDELINE

LABORATORY GROWN DIAMOND REPORT

February 9, 2023

IGI Report Number	LG566335541
Description	LABORATORY GROWN DIAMOND

Shape and Cutting Style **ROUND BRILLIANT**

Measurements 8.27 - 8.30 X 5.09 MM

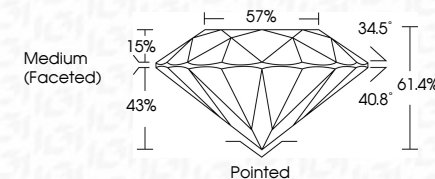
## GRADING RESULTS

Carat Weight 2.14 CARATS

Color Grade

Clarity Grade VS 1

Cut Grade **IDEAL**



### ADDITIONAL GRADING INFORMATION

Polish **EXCELLENT**Symmetry **EXCELLENT**Fluorescence **NONE**Inscription(s)  LG566335541

Comments: HEARTS & ARROWS  
This Laboratory Grown Diamond was created by  
Chemical Vapor Deposition (CVD) growth process and  
may include post-growth treatment.  
Type IIa



February 9, 2023  
IGI Report No LG566335541  
ROUND BRILLIANT

<b>8.27 - 8.30 X 5.09 MM</b>		<b>2.14 CARATS</b>	
Carat Weight		VS 1	
Color Grade		IDEAL	
Clarity Grade		61.4%	
Cut Grade		57%	
Depth		Medium (faceted)	
Table			
Girdle			
Culet			
Polish			
Symmetry			
Fluorescence			

Comments: The Laboratory Grown Diamond was treated by Chemical Vapor Deposition (CVD) growth process and may include post-growth treatment.