



**INTERNATIONAL  
GEMOLOGICAL  
INSTITUTE**

**ELECTRONIC COPY**

**LABORATORY GROWN  
DIAMOND REPORT**

**LG566394111**

**IGI LABORATORY GROWN  
DIAMOND ID REPORT**

January 21, 2023  
IGI Report Number **LG566394111**  
**CUT CORNERED RECTANGULAR  
MODIFIED BRILLIANT**  
**6.50 X 4.44 X 2.99 MM**  
Carat Weight 0.75 CARAT  
Color Grade H  
Clarity Grade VS 2  
Polish EXCELLENT  
Symmetry EXCELLENT  
Fluorescence NONE  
Inscription(s) **LABGROWN (LGI) LG566394111**

Comments: This Laboratory Grown Diamond was created by Chemical Vapor Deposition (CVD) growth process and may include post-growth treatment.Type Ila

**LABORATORY GROWN DIAMOND REPORT**

**IGI LABORATORY GROWN DIAMOND IDENTIFICATION REPORT**

January 21, 2023  
IGI Report Number **LG566394111**  
Description **LABORATORY GROWN DIAMOND**  
Shape and Cutting Style **CUT CORNERED RECTANGULAR MODIFIED  
BRILLIANT**  
Measurements **6.50 X 4.44 X 2.99 MM**

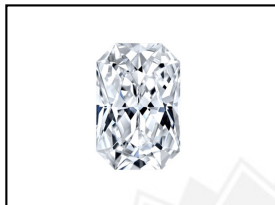
**GRADING RESULTS**

Carat Weight 0.75 CARAT  
Color Grade H  
Clarity Grade VS 2

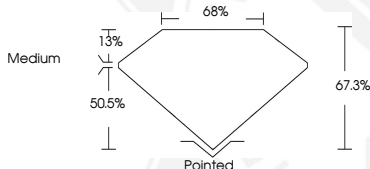
**ADDITIONAL GRADING INFORMATION**

Polish EXCELLENT  
Symmetry EXCELLENT  
Fluorescence NONE  
Inscription(s) **LABGROWN (LGI) LG566394111**

Comments: This Laboratory Grown Diamond was created by Chemical Vapor Deposition (CVD) growth process and may include post-growth treatment.  
Type Ila



**LASERSCRIBE<sup>SM</sup>**  
Sample Images Used



**IGI LABORATORY GROWN  
DIAMOND ID REPORT**

January 21, 2023  
IGI Report Number **LG566394111**  
**CUT CORNERED RECTANGULAR  
MODIFIED BRILLIANT**  
**6.50 X 4.44 X 2.99 MM**  
Carat Weight 0.75 CARAT  
Color Grade H  
Clarity Grade VS 2  
Polish EXCELLENT  
Symmetry EXCELLENT  
Fluorescence NONE  
Inscription(s) **LABGROWN (LGI) LG566394111**

Comments: This Laboratory Grown Diamond was created by Chemical Vapor Deposition (CVD) growth process and may include post-growth treatment.Type Ila

THIS DOCUMENT WAS PRODUCED WITH THE FOLLOWING SECURITY MEASURES: SPECIAL DOCUMENT PAPER, INK SCREENS, WATERMARK, BACKGROUND DESIGN, HOLOGRAM AND OTHER SECURITY FEATURES NOT LISTED AND DO EXCEED DOCUMENT SECURITY INDUSTRY GUIDELINES.

For terms & conditions and to verify this report, please visit [www.igi.org](http://www.igi.org)