



INTERNATIONAL GEMOLOGICAL INSTITUTE

ELECTRONIC COPY

LABORATORY GROWN DIAMOND REPORT

LG566394115

LABORATORY GROWN DIAMOND REPORT

IGI LABORATORY GROWN DIAMOND IDENTIFICATION REPORT

January 20, 2023

IGI Report Number

LG566394115

Description
LABORATORY GROWN DIAMOND
Shape and Cutting Style
CUT CORNERED RECTANGULAR MODIFIED
BRILLIANT

Measurements
6.15 X 4.29 X 3.00 MM

GRADING RESULTS

Carat Weight
0.70 CARAT

Color Grade
F

Clarity Grade
SI 1

ADDITIONAL GRADING INFORMATION

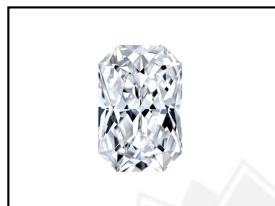
Polish
EXCELLENT

Symmetry
VERY GOOD

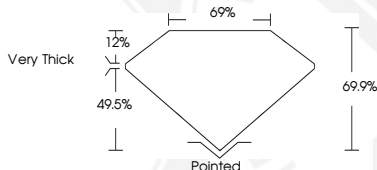
Fluorescence
NONE

Inscription(s)
LABGROWN (IGI) LG566394115

Comments: This Laboratory Grown Diamond was created by Chemical Vapor Deposition (CVD) growth process and may include post-growth treatment.
Type Ila



LASERSCRIBE SM
Sample Images Used



IGI LABORATORY GROWN DIAMOND ID REPORT

January 20, 2023

IGI Report Number **LG566394115**

**CUT CORNERED RECTANGULAR
MODIFIED BRILLIANT**

6.15 X 4.29 X 3.00 MM

Carat Weight
0.70 CARAT
Color Grade
F
Clarity Grade
SI 1
Polish
EXCELLENT
Symmetry
VERY GOOD
Fluorescence
NONE
Inscription(s)
LABGROWN (IGI)
LG566394115

Comments: This Laboratory Grown Diamond was created by Chemical Vapor Deposition (CVD) growth process and may include post-growth treatment.Type Ila

IGI LABORATORY GROWN DIAMOND ID REPORT

January 20, 2023

IGI Report Number **LG566394115**

**CUT CORNERED RECTANGULAR
MODIFIED BRILLIANT**

6.15 X 4.29 X 3.00 MM

Carat Weight
0.70 CARAT
Color Grade
F
Clarity Grade
SI 1
Polish
EXCELLENT
Symmetry
VERY GOOD
Fluorescence
NONE
Inscription(s)
LABGROWN (IGI)
LG566394115

Comments: This Laboratory Grown Diamond was created by Chemical Vapor Deposition (CVD) growth process and may include post-growth treatment.Type Ila



THIS DOCUMENT WAS PRODUCED WITH THE FOLLOWING SECURITY MEASURES: SPECIAL DOCUMENT PAPER, INK SCREENS, WATERMARK, BACKGROUND DESIGN, HOLOGRAM AND OTHER SECURITY FEATURES NOT LISTED AND DO EXCEED DOCUMENT SECURITY INDUSTRY GUIDELINES.

For terms & conditions and to verify this report, please visit www.igi.org