



ELECTRONIC COPY

LABORATORY GROWN DIAMOND REPORT

LG566394642

Report verification at igi.org

**LABORATORY GROWN
DIAMOND REPORT**

LABORATORY GROWN DIAMOND REPORT

LABORATORY GROWN DIAMOND REPORT

January 23, 2023
IGI Report Number **LG566394642**
Description **LABORATORY GROWN
DIAMOND**
Shape and Cutting Style **CUT CORNERED RECTANGULAR
MODIFIED BRILLIANT**
Measurements **15.04 X 10.16 X 6.75 MM**

GRADING RESULTS

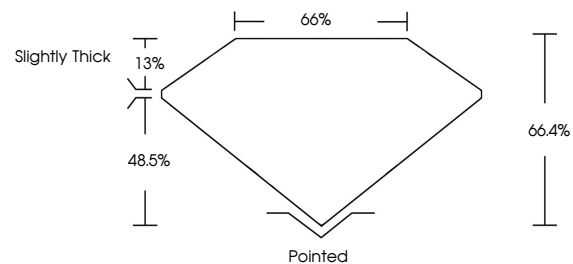
Carat Weight **9.20 CARATS**
Color Grade **H**
Clarity Grade **SI 1**

ADDITIONAL GRADING INFORMATION

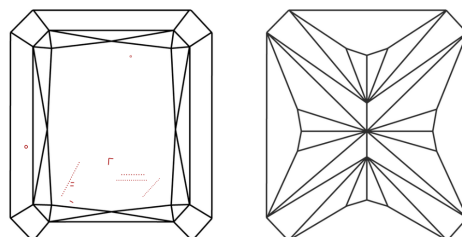
Polish **EXCELLENT**
Symmetry **EXCELLENT**
Fluorescence **NONE**
Inscription(s) **LABGROWN (LGR) LG566394642**

Comments: This Laboratory Grown Diamond was created by Chemical Vapor Deposition (CVD) growth process and may include post-growth treatment. Type IIa

PROPORTIONS



CLARITY CHARACTERISTICS



KEY TO SYMBOLS

Red symbols indicate internal characteristics.
Green symbols indicate external characteristics.

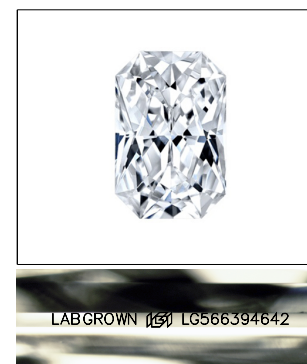
GRADING SCALES

CLARITY

IF	VVS ¹⁻²	VS ¹⁻²	SI ¹⁻²	I ¹⁻³
Internally Flawless	Very Very Slightly Included	Very Slightly Included	Slightly Included	Included

COLOR

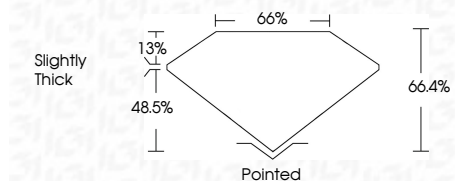
D	E	F	G	H	I	J	Faint	Very Light	Light



LASERSCRIBESM

Sample Image Used

January 23, 2023
IGI Report Number **LG566394642**
Description **LABORATORY GROWN
DIAMOND**
Shape and Cutting Style **CUT CORNERED
RECTANGULAR MODIFIED
BRILLIANT**
Measurements **15.04 X 10.16 X 6.75 MM**
GRADING RESULTS
Carat Weight **9.20 CARATS**
Color Grade **H**
Clarity Grade **SI 1**



ADDITIONAL GRADING INFORMATION

Polish **EXCELLENT**
Symmetry **EXCELLENT**
Fluorescence **NONE**
Inscription(s) **LABGROWN (LGR) LG566394642**

Comments: This Laboratory Grown Diamond was created by Chemical Vapor Deposition (CVD) growth process and may include post-growth treatment. Type IIa



IGI

January 23, 2023
IGI Report No. LG566394642
CUT CORNERED RECT. MODIFIED BRILLIANT
15.04 X 10.16 X 6.75 MM
9.20 CARATS
H
SI 1
66.4%
48.5%
66.4%
Slightly Thick
Pointed
EXCELLENT
EXCELLENT
NONE
LABGROWN (LGR) LG566394642
Comments: This Laboratory Grown Diamond was created by Chemical Vapor Deposition (CVD) growth process and may include post-growth treatment. Type IIa