



**ELECTRONIC COPY**

**LABORATORY GROWN DIAMOND REPORT**

LG567342333

Report verification at [igi.org](http://igi.org)

**LABORATORY GROWN  
DIAMOND REPORT**

**LABORATORY GROWN DIAMOND REPORT**

**LABORATORY GROWN DIAMOND REPORT**

January 31, 2023  
IGI Report Number **LG567342333**  
Description **LABORATORY GROWN  
DIAMOND**  
Shape and Cutting Style **ROUND BRILLIANT**  
Measurements **6.93 - 6.98 X 4.20 MM**

**GRADING RESULTS**

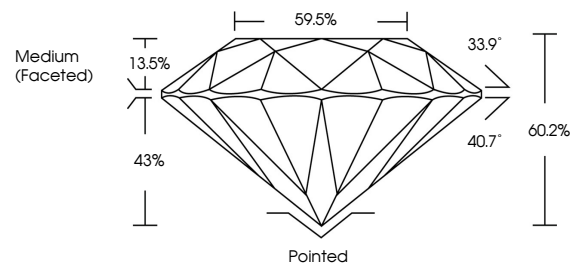
Carat Weight **1.25 CARAT**  
Color Grade **D**  
Clarity Grade **SI 1**  
Cut Grade **IDEAL**

**ADDITIONAL GRADING INFORMATION**

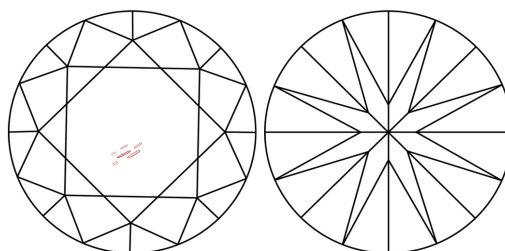
Polish **EXCELLENT**  
Symmetry **EXCELLENT**  
Fluorescence **NONE**  
Inscription(s) **LABGROWN (IGI) LG567342333**

Comments: As Grown - No indication of post-growth treatment.  
This Laboratory Grown Diamond was created by High Pressure High Temperature (HPHT) growth process.  
Type II

**PROPORTIONS**



**CLARITY CHARACTERISTICS**



**KEY TO SYMBOLS**

Red symbols indicate internal characteristics.  
Green symbols indicate external characteristics.

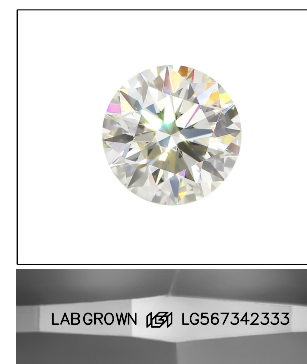
**GRADING SCALES**

**CLARITY**

| IF                  | VVS <sup>1-2</sup>          | VS <sup>1-2</sup>      | SI <sup>1-2</sup> | I <sup>1-3</sup> |
|---------------------|-----------------------------|------------------------|-------------------|------------------|
| Internally Flawless | Very Very Slightly Included | Very Slightly Included | Slightly Included | Included         |

**COLOR**

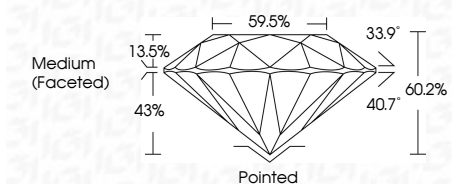
| D | E | F | G | H | I | J | Faint | Very Light | Light |
|---|---|---|---|---|---|---|-------|------------|-------|
|---|---|---|---|---|---|---|-------|------------|-------|



**LASERSCRIBE<sup>SM</sup>**

Sample Image Used

January 31, 2023  
IGI Report Number **LG567342333**  
Description **LABORATORY GROWN  
DIAMOND**  
Shape and Cutting Style **ROUND BRILLIANT**  
Measurements **6.93 - 6.98 X 4.20 MM**  
**GRADING RESULTS**  
Carat Weight **1.25 CARAT**  
Color Grade **D**  
Clarity Grade **SI 1**  
Cut Grade **IDEAL**



**ADDITIONAL GRADING INFORMATION**

Polish **EXCELLENT**  
Symmetry **EXCELLENT**  
Fluorescence **NONE**  
Inscription(s) **LABGROWN (IGI) LG567342333**  
Comments: As Grown - No indication of post-growth treatment.  
This Laboratory Grown Diamond was created by High Pressure High Temperature (HPHT) growth process.  
Type II



**IGI**

|                  |                           |                 |                       |            |   |      |       |       |       |                  |         |           |           |      |                            |   |
|------------------|---------------------------|-----------------|-----------------------|------------|---|------|-------|-------|-------|------------------|---------|-----------|-----------|------|----------------------------|---|
| January 31, 2023 | IGI Report No LG567342333 | ROUND BRILLIANT | 6.93 - 6.98 X 4.20 MM | 1.25 CARAT | D | SI 1 | IDEAL | 60.2% | 59.5% | Medium (Faceted) | Pointed | EXCELLENT | EXCELLENT | NONE | LABGROWN (IGI) LG567342333 | Comments: As Grown - No indication of post-growth treatment.<br>This Laboratory Grown Diamond was created by High Pressure High Temperature (HPHT) growth process.<br>Type II |
|------------------|---------------------------|-----------------|-----------------------|------------|---|------|-------|-------|-------|------------------|---------|-----------|-----------|------|----------------------------|---|

