

ELECTRONIC COPY

LABORATORY GROWN DIAMOND REPORT

February 4, 2023	
IGI Report Number	LG567347053
Description	LABORATORY GROWN DIAMOND
Shape and Cutting Style	ROUND BRILLIANT
Measurements	7.73 - 7.77 X 4.74 MM

GRADING RESULTS

Carat Weight	1.74 CARAT
Color Grade	D
Clarity Grade	VS 1
Cut Grade	IDEAL

ADDITIONAL GRADING INFORMATION

Polish	EXCELLENT
Symmetry	EXCELLENT
Fluorescence	NONE
Inscription(s)	LABGROWN 151 LG567347053

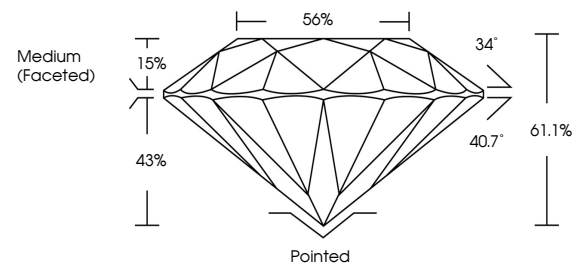
Inscription(s) **LABGROWN ~~131~~ LG567347053**
 Comments: HEARTS & ARROWS
 As Grown - No indication of post-growth treatment.
 This Laboratory Grown Diamond was created by High
 Pressure High Temperature (HPHT) growth process.
 Type II

LABORATORY GROWN DIAMOND REPORT

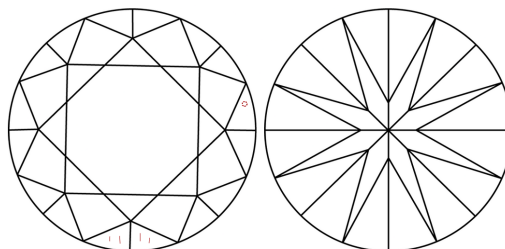
LG567347053

Report verification at igi.org

PROPORTIONS

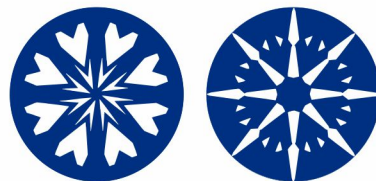


CLARITY CHARACTERISTICS



KEY TO SYMBOLS

Red symbols indicate internal characteristics.
Green symbols indicate external characteristics.

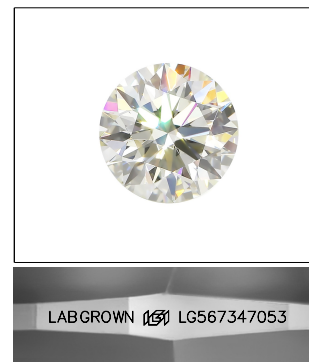


www.igi.org

LABORATORY GROWN
DIAMOND REPORT

GRADING SCALES

CLARITY									
IF		VVS ¹⁻²			VS ¹⁻²		SI ¹⁻²		I ¹⁻³
Internally Flawless		Very Very Slightly Included			Very Slightly Included		Slightly Included		Included
COLOR									
D	E	F	G	H	I	J	Faint	Very Light	Light

LASERSCRIBESM

Sample Image Used



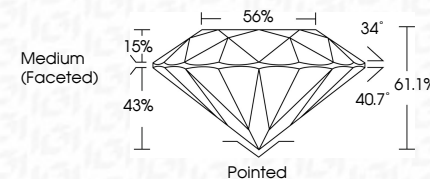
© IGI 2020, International Gemological Institute

FD - 10 20

THIS DOCUMENT WAS PRODUCED WITH THE FOLLOWING SECURITY MEASURES: SPECIAL DOCUMENT PAPER, INK SCREENS, WATERMARK, BACKGROUND DESIGNS, HOLOGRAM AND OTHER SECURITY FEATURES NOT LISTED AND DO EXCEED DOCUMENT SECURITY INDUSTRY GUIDELINES

LABORATORY GROWN DIAMOND REPORT

February 4, 2023	
IGI Report Number	LG567347053
Description	LABORATORY GROWN DIAMOND
Shape and Cutting Style	ROUND BRILLIANT
Measurements	7.73 - 7.77 X 4.74 MM
GRADING RESULTS	
Carat Weight	1.71 CARAT
Color Grade	D
Clarity Grade	VS 1
Cut Grade	IDEAL



ADDITIONAL GRADING INFORMATION

Polish	EXCELLENT
Symmetry	EXCELLENT
Fluorescence	NONE
Inscription(s)	LABGROWN (157) LG567347053

Comments: HEARTS & ARROWS
As Grown - No indication of post-growth treatment.
This Laboratory Grown Diamond was created by High
Pressure High Temperature (HPHT) growth process.
Type II



February 4, 2023
IGI Report No LG567347053
ROUND BRILLIANT

	1.75 - 1.77 X 4.74 MM		1.74 CARAT	
	Canal Weight	D	VS 1	
	Color Grade		IDEAL	
	Clarity Grade		61.1%	
	Cut Grade		55%	
	Depth		Medium (Faceted)	
	Table		Polished	
	Girdle		EXCELLENT	
	Culet		EXCELLENT	
	Polish		NONE	
	Symmetry		LARGE CROWN	
	Fluorescence		LARGE CROWN	
Description(s)				

Comments:
HEARTS & ARROWS
As Grown - No Indication
treatment.
This Laboratory Grown
created by High Pressure
Temperature (HPHT)