



**INTERNATIONAL
GEMOLOGICAL
INSTITUTE**

ELECTRONIC COPY

**LABORATORY GROWN
DIAMOND REPORT**

LG567349476

**IGI LABORATORY GROWN
DIAMOND ID REPORT**

February 8, 2023
IGI Report Number **LG567349476**
PEAR BRILLIANT
8.52 X 5.19 X 3.16 MM
Carat Weight 0.82 CARAT
Color Grade D
Clarity Grade VS 1
Polish EXCELLENT
Symmetry EXCELLENT
Fluorescence NONE
Inscription(s) LG567349476

Comments: This Laboratory Grown Diamond was created by Chemical Vapor Deposition (CVD) growth process and may include post-growth treatment.Type IIa

LABORATORY GROWN DIAMOND REPORT

IGI LABORATORY GROWN DIAMOND IDENTIFICATION REPORT

February 8, 2023
IGI Report Number LG567349476
Description LABORATORY GROWN DIAMOND
Shape and Cutting Style PEAR BRILLIANT
Measurements 8.52 X 5.19 X 3.16 MM

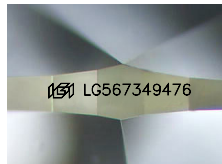
GRADING RESULTS

Carat Weight 0.82 CARAT
Color Grade D
Clarity Grade VS 1

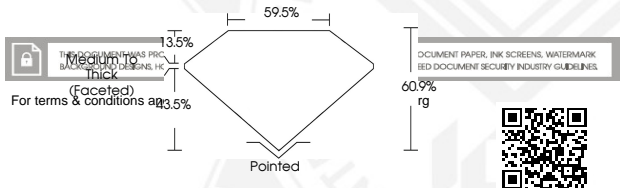
ADDITIONAL GRADING INFORMATION

Polish EXCELLENT
Symmetry EXCELLENT
Fluorescence NONE
Inscription(s) LG567349476

Comments: This Laboratory Grown Diamond was created by Chemical Vapor Deposition (CVD) growth process and may include post-growth treatment.
Type IIa



Sample Image Used



This document has a digital watermark. For terms & conditions go to [Medium to Thick](#)

DOCUMENT PAPER, INK SCREENS, WATERMARK
BID DOCUMENT SECURITY INDUSTRY GUIDELINES



**IGI LABORATORY GROWN
DIAMOND ID REPORT**

February 8, 2023
IGI Report Number **LG567349476**
PEAR BRILLIANT
8.52 X 5.19 X 3.16 MM
Carat Weight 0.82 CARAT
Color Grade D
Clarity Grade VS 1
Polish EXCELLENT
Symmetry EXCELLENT
Fluorescence NONE
Inscription(s) LG567349476

Comments: This Laboratory Grown Diamond was created by Chemical Vapor Deposition (CVD) growth process and may include post-growth treatment.Type IIa