



**INTERNATIONAL
GEMOLOGICAL
INSTITUTE**

ELECTRONIC COPY

**LABORATORY GROWN
DIAMOND REPORT**

LG567352307

**IGI LABORATORY GROWN
DIAMOND ID REPORT**

February 4, 2023
IGI Report Number **LG567352307**
PEAR BRILLIANT
7.39 X 4.44 X 2.62 MM
Carat Weight 0.50 CARAT
Color Grade D
Clarity Grade VS 2
Polish VERY GOOD
Symmetry VERY GOOD
Fluorescence NONE
Inscription(s) LG567352307

Comments: This Laboratory Grown Diamond was created by Chemical Vapor Deposition (CVD) growth process and may include post-growth treatment.Type IIa

LABORATORY GROWN DIAMOND REPORT

IGI LABORATORY GROWN DIAMOND IDENTIFICATION REPORT

February 4, 2023
IGI Report Number LG567352307
Description LABORATORY GROWN DIAMOND
Shape and Cutting Style PEAR BRILLIANT
Measurements 7.39 X 4.44 X 2.62 MM

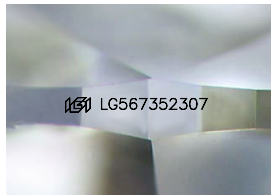
GRADING RESULTS

Carat Weight 0.50 CARAT
Color Grade D
Clarity Grade VS 2

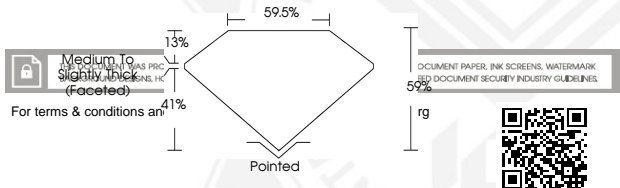
ADDITIONAL GRADING INFORMATION

Polish VERY GOOD
Symmetry VERY GOOD
Fluorescence NONE
Inscription(s) LG567352307

Comments: This Laboratory Grown Diamond was created by Chemical Vapor Deposition (CVD) growth process and may include post-growth treatment.
Type IIa



Sample Image Used



**IGI LABORATORY GROWN
DIAMOND ID REPORT**

February 4, 2023
IGI Report Number **LG567352307**
PEAR BRILLIANT
7.39 X 4.44 X 2.62 MM
Carat Weight 0.50 CARAT
Color Grade D
Clarity Grade VS 2
Polish VERY GOOD
Symmetry VERY GOOD
Fluorescence NONE
Inscription(s) LG567352307

Comments: This Laboratory Grown Diamond was created by Chemical Vapor Deposition (CVD) growth process and may include post-growth treatment.Type IIa