



**INTERNATIONAL
GEMOLOGICAL
INSTITUTE**

ELECTRONIC COPY

**LABORATORY GROWN
DIAMOND REPORT**

LG567369049

**IGI LABORATORY GROWN
DIAMOND ID REPORT**

February 6, 2023
IGI Report Number **LG567369049**
ROUND BRILLIANT
5.27 - 5.31 X 3.15 MM
Carat Weight 0.54 CARAT
Color Grade D
Clarity Grade VS 2
Cut Grade EXCELLENT
Polish VERY GOOD
Symmetry VERY GOOD
Fluorescence NONE
Inscription(s) LG567369049

LABORATORY GROWN DIAMOND REPORT

IGI LABORATORY GROWN DIAMOND IDENTIFICATION REPORT

February 6, 2023
IGI Report Number LG567369049
Description LABORATORY GROWN DIAMOND
Shape and Cutting Style ROUND BRILLIANT
Measurements 5.27 - 5.31 X 3.15 MM

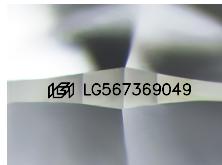
GRADING RESULTS

Carat Weight 0.54 CARAT
Color Grade D
Clarity Grade VS 2
Cut Grade EXCELLENT

ADDITIONAL GRADING INFORMATION

Polish VERY GOOD
Symmetry VERY GOOD
Fluorescence NONE
Inscription(s) LG567369049

Comments: As Grown - No indication of post-growth treatment.
This Laboratory Grown Diamond was created by High Pressure High Temperature (HPHT) growth process.
Type II



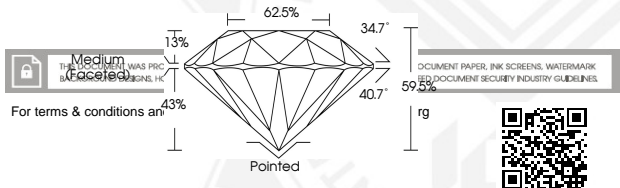
Sample Image Used



**IGI LABORATORY GROWN
DIAMOND ID REPORT**

February 6, 2023
IGI Report Number **LG567369049**
ROUND BRILLIANT
5.27 - 5.31 X 3.15 MM
Carat Weight 0.54 CARAT
Color Grade D
Clarity Grade VS 2
Cut Grade EXCELLENT
Polish VERY GOOD
Symmetry VERY GOOD
Fluorescence NONE
Inscription(s) LG567369049

Comments: As Grown - No indication of post-growth treatment.
This Laboratory Grown Diamond was created by High Pressure High Temperature (HPHT) growth process.
Type II



Medium (received)
THIS DOCUMENT WAS PRINTED ON SECURE PAPER IN ACCORDANCE WITH THE DOCUMENT SECURITY INDUSTRY GUIDELINES.

For terms & conditions an