



**INTERNATIONAL
GEMOLOGICAL
INSTITUTE**

ELECTRONIC COPY

**LABORATORY GROWN
DIAMOND REPORT**

LG567372333

**IGI LABORATORY GROWN
DIAMOND ID REPORT**

February 13, 2023
IGI Report Number **LG567372333**
ROUND BRILLIANT
5.20 - 5.21 X 3.14 MM
Carat Weight 0.51 CARAT
Color Grade E
Clarity Grade SI 1
Cut Grade IDEAL
Polish EXCELLENT
Symmetry EXCELLENT
Fluorescence NONE
Inscription(s) LG567372333

Comments: This Laboratory Grown Diamond was created by Chemical Vapor Deposition (CVD) growth process and may include post-growth treatment.Type IIa

LABORATORY GROWN DIAMOND REPORT

IGI LABORATORY GROWN DIAMOND IDENTIFICATION REPORT

February 13, 2023
IGI Report Number LG567372333
Description LABORATORY GROWN DIAMOND
Shape and Cutting Style ROUND BRILLIANT
Measurements 5.20 - 5.21 X 3.14 MM

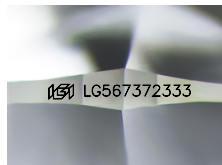
GRADING RESULTS

Carat Weight 0.51 CARAT
Color Grade E
Clarity Grade SI 1
Cut Grade IDEAL

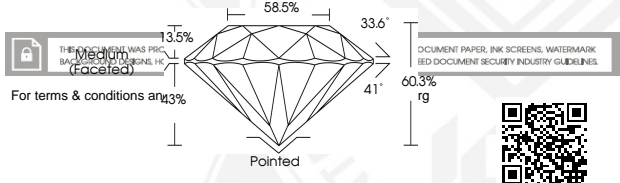
ADDITIONAL GRADING INFORMATION

Polish EXCELLENT
Symmetry EXCELLENT
Fluorescence NONE
Inscription(s) LG567372333

Comments: This Laboratory Grown Diamond was created by Chemical Vapor Deposition (CVD) growth process and may include post-growth treatment.
Type IIa



Sample Image Used



**IGI LABORATORY GROWN
DIAMOND ID REPORT**

February 13, 2023
IGI Report Number **LG567372333**
ROUND BRILLIANT
5.20 - 5.21 X 3.14 MM
Carat Weight 0.51 CARAT
Color Grade E
Clarity Grade SI 1
Cut Grade IDEAL
Polish EXCELLENT
Symmetry EXCELLENT
Fluorescence NONE
Inscription(s) LG567372333

Comments: This Laboratory Grown Diamond was created by Chemical Vapor Deposition (CVD) growth process and may include post-growth treatment.Type IIa