



**INTERNATIONAL
GEMOLOGICAL
INSTITUTE**

ELECTRONIC COPY

**LABORATORY GROWN
DIAMOND REPORT**

LG567382632

**IGI LABORATORY GROWN
DIAMOND ID REPORT**

February 11, 2023
IGI Report Number **LG567382632**
MARQUISE BRILLIANT
9.38 X 4.59 X 2.89 MM
Carat Weight 0.70 CARAT
Color Grade E
Clarity Grade VVS 1
Polish EXCELLENT
Symmetry EXCELLENT
Fluorescence NONE
Inscription(s) LG567382632

Comments: As Grown - No indication of post-growth treatment. This Laboratory Grown Diamond was created by High Pressure High Temperature (HPHT) growth process. Type II

LABORATORY GROWN DIAMOND REPORT

IGI LABORATORY GROWN DIAMOND IDENTIFICATION REPORT

February 11, 2023
IGI Report Number LG567382632
Description LABORATORY GROWN DIAMOND
Shape and Cutting Style MARQUISE BRILLIANT
Measurements 9.38 X 4.59 X 2.89 MM

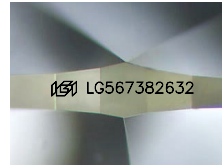
GRADING RESULTS

Carat Weight 0.70 CARAT
Color Grade E
Clarity Grade VVS 1

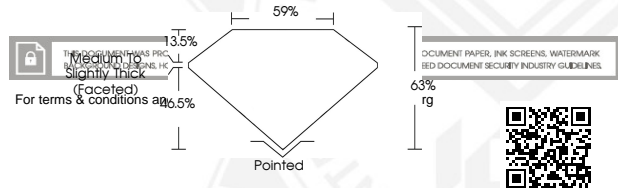
ADDITIONAL GRADING INFORMATION

Polish EXCELLENT
Symmetry EXCELLENT
Fluorescence NONE
Inscription(s) LG567382632

Comments: As Grown - No indication of post-growth treatment. This Laboratory Grown Diamond was created by High Pressure High Temperature (HPHT) growth process. Type II



Sample Image Used



For terms & conditions go to [www.igi.com](#)

**IGI LABORATORY GROWN
DIAMOND ID REPORT**

February 11, 2023
IGI Report Number **LG567382632**
MARQUISE BRILLIANT
9.38 X 4.59 X 2.89 MM
Carat Weight 0.70 CARAT
Color Grade E
Clarity Grade VVS 1
Polish EXCELLENT
Symmetry EXCELLENT
Fluorescence NONE
Inscription(s) LG567382632

Comments: As Grown - No indication of post-growth treatment. This Laboratory Grown Diamond was created by High Pressure High Temperature (HPHT) growth process. Type II