



**INTERNATIONAL
GEMOLOGICAL
INSTITUTE**

ELECTRONIC COPY

**LABORATORY GROWN
DIAMOND REPORT**

LG567384524

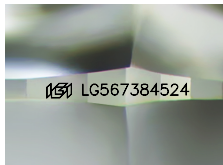
**IGI LABORATORY GROWN
DIAMOND ID REPORT**

February 10, 2023
IGI Report Number **LG567384524**
ROUND BRILLIANT
5.96 - 6.00 X 3.71 MM
Carat Weight 0.82 CARAT
Color Grade D
Clarity Grade VVS 1
Cut Grade IDEAL
Polish EXCELLENT
Symmetry EXCELLENT
Fluorescence NONE
Inscription(s) LG567384524

LABORATORY GROWN DIAMOND REPORT

IGI LABORATORY GROWN DIAMOND IDENTIFICATION REPORT

February 10, 2023
IGI Report Number LG567384524
Description LABORATORY GROWN DIAMOND
Shape and Cutting Style ROUND BRILLIANT
Measurements 5.96 - 6.00 X 3.71 MM



Sample Image Used



Comments: As Grown - No indication of post-growth treatment. This Laboratory Grown Diamond was created by High Pressure High Temperature (HPHT) growth process. Type II

GRADING RESULTS

Carat Weight 0.82 CARAT
Color Grade D
Clarity Grade VVS 1
Cut Grade IDEAL

ADDITIONAL GRADING INFORMATION

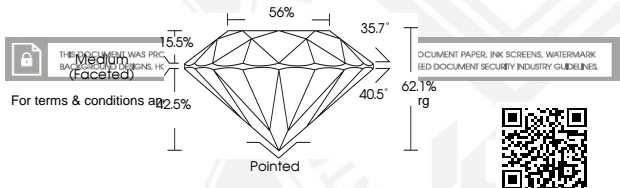
Polish EXCELLENT
Symmetry EXCELLENT
Fluorescence NONE
Inscription(s) LG567384524

Comments: As Grown - No indication of post-growth treatment. This Laboratory Grown Diamond was created by High Pressure High Temperature (HPHT) growth process. Type II

**IGI LABORATORY GROWN
DIAMOND ID REPORT**

February 10, 2023
IGI Report Number **LG567384524**
ROUND BRILLIANT
5.96 - 6.00 X 3.71 MM
Carat Weight 0.82 CARAT
Color Grade D
Clarity Grade VVS 1
Cut Grade IDEAL
Polish EXCELLENT
Symmetry EXCELLENT
Fluorescence NONE
Inscription(s) LG567384524

Comments: As Grown - No indication of post-growth treatment. This Laboratory Grown Diamond was created by High Pressure High Temperature (HPHT) growth process. Type II



THIS DOCUMENT WAS PRINTED ON SECURITY PAPER (Faceted)

DOCUMENT PAPER, INK SCREENS, WATERMARK
FOLLOW DOCUMENT SECURITY INDUSTRY GUIDELINES.

For terms & conditions go to [www.igi.com](#)