



**INTERNATIONAL
GEMOLOGICAL
INSTITUTE**

ELECTRONIC COPY

**LABORATORY GROWN
DIAMOND REPORT**

LG569307052

**IGI LABORATORY GROWN
DIAMOND ID REPORT**

February 12, 2023
IGI Report Number **LG569307052**
EMERALD CUT

6.38 X 4.20 X 2.71 MM
Carat Weight 0.73 CARAT
Color Grade G
Clarity Grade VVS 1
Polish VERY GOOD
Symmetry EXCELLENT
Fluorescence NONE
Inscription(s) LG569307052

Comments: This Laboratory Grown Diamond was created by Chemical Vapor Deposition (CVD) growth process and may include post-growth treatment.Type IIa

LABORATORY GROWN DIAMOND REPORT

IGI LABORATORY GROWN DIAMOND IDENTIFICATION REPORT

February 12, 2023
IGI Report Number LG569307052
Description LABORATORY GROWN DIAMOND
Shape and Cutting Style EMERALD CUT
Measurements 6.38 X 4.20 X 2.71 MM

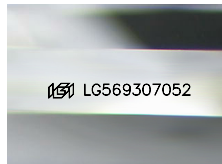
GRADING RESULTS

Carat Weight 0.73 CARAT
Color Grade G
Clarity Grade VVS 1

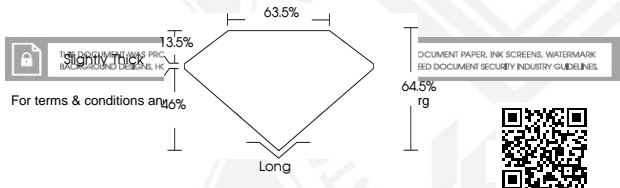
ADDITIONAL GRADING INFORMATION

Polish VERY GOOD
Symmetry EXCELLENT
Fluorescence NONE
Inscription(s) LG569307052

Comments: This Laboratory Grown Diamond was created by Chemical Vapor Deposition (CVD) growth process and may include post-growth treatment.
Type IIa



Sample Image Used



**IGI LABORATORY GROWN
DIAMOND ID REPORT**

February 12, 2023
IGI Report Number **LG569307052**
EMERALD CUT

6.38 X 4.20 X 2.71 MM
Carat Weight 0.73 CARAT
Color Grade G
Clarity Grade VVS 1
Polish VERY GOOD
Symmetry EXCELLENT
Fluorescence NONE
Inscription(s) LG569307052

Comments: This Laboratory Grown Diamond was created by Chemical Vapor Deposition (CVD) growth process and may include post-growth treatment.Type IIa