



# INTERNATIONAL GEMOLOGICAL INSTITUTE

ELECTRONIC COPY

## LABORATORY GROWN DIAMOND REPORT

LG569307430

### IGI LABORATORY GROWN DIAMOND ID REPORT

February 15, 2023  
IGI Report Number **LG569307430**  
**ROUND BRILLIANT**  
**5.22 - 5.24 X 3.13 MM**  
Carat Weight 0.53 CARAT  
Color Grade D  
Clarity Grade VS 1  
Cut Grade IDEAL  
Polish EXCELLENT  
Symmetry EXCELLENT  
Fluorescence NONE  
Inscription(s) **IGI LG569307430**

Comments: As Grown - No indication of post-growth treatment. This Laboratory Grown Diamond was created by High Pressure High Temperature (HPHT) growth process. Type II

## LABORATORY GROWN DIAMOND REPORT

### IGI LABORATORY GROWN DIAMOND IDENTIFICATION REPORT

February 15, 2023  
IGI Report Number LG569307430  
Description LABORATORY GROWN DIAMOND  
Shape and Cutting Style ROUND BRILLIANT  
Measurements 5.22 - 5.24 X 3.13 MM

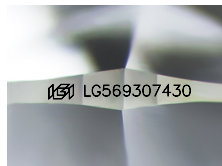
### GRADING RESULTS

Carat Weight 0.53 CARAT  
Color Grade D  
Clarity Grade VS 1  
Cut Grade IDEAL

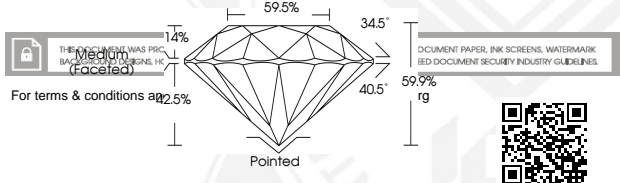
### ADDITIONAL GRADING INFORMATION

Polish EXCELLENT  
Symmetry EXCELLENT  
Fluorescence NONE  
Inscription(s) **IGI LG569307430**

Comments: As Grown - No indication of post-growth treatment. This Laboratory Grown Diamond was created by High Pressure High Temperature (HPHT) growth process. Type II



Sample Image Used



### IGI LABORATORY GROWN DIAMOND ID REPORT

February 15, 2023  
IGI Report Number **LG569307430**  
**ROUND BRILLIANT**  
**5.22 - 5.24 X 3.13 MM**  
Carat Weight 0.53 CARAT  
Color Grade D  
Clarity Grade VS 1  
Cut Grade IDEAL  
Polish EXCELLENT  
Symmetry EXCELLENT  
Fluorescence NONE  
Inscription(s) **IGI LG569307430**

Comments: As Grown - No indication of post-growth treatment. This Laboratory Grown Diamond was created by High Pressure High Temperature (HPHT) growth process. Type II