



**INTERNATIONAL
GEMOLOGICAL
INSTITUTE**

ELECTRONIC COPY

**LABORATORY GROWN
DIAMOND REPORT**

LG569311116

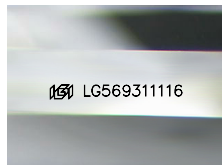
**IGI LABORATORY GROWN
DIAMOND ID REPORT**

February 24, 2023
IGI Report Number **LG569311116**
**CUT CORNERED RECTANGULAR
MODIFIED BRILLIANT**
6.57 X 4.85 X 3.02 MM

LABORATORY GROWN DIAMOND REPORT

IGI LABORATORY GROWN DIAMOND IDENTIFICATION REPORT

February 24, 2023
IGI Report Number **LG569311116**
Description **LABORATORY GROWN DIAMOND**
Shape and Cutting Style **CUT CORNERED RECTANGULAR MODIFIED
BRILLIANT**
Measurements **6.57 X 4.85 X 3.02 MM**



Sample Image Used

Carat Weight **0.88 CARAT**
Color Grade **FANCY VIVID YELLOW**
Clarity Grade **VS 1**
Polish **VERY GOOD**
Symmetry **VERY GOOD**
Fluorescence **NONE**
Inscription(s) **IGI LG569311116**

Comments: As Grown - No indication of post-growth treatment. This Laboratory Grown Diamond was created by High Pressure High Temperature (HPHT) growth process.

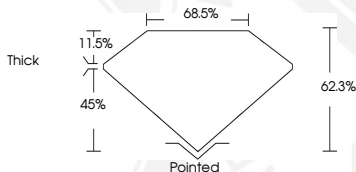
GRADING RESULTS

Carat Weight **0.88 CARAT**
Color Grade **FANCY VIVID YELLOW**
Clarity Grade **VS 1**

ADDITIONAL GRADING INFORMATION

Polish **VERY GOOD**
Symmetry **VERY GOOD**
Fluorescence **NONE**
Inscription(s) **IGI LG569311116**

Comments: As Grown - No indication of post-growth treatment. This Laboratory Grown Diamond was created by High Pressure High Temperature (HPHT) growth process.



**IGI LABORATORY GROWN
DIAMOND ID REPORT**

February 24, 2023
IGI Report Number **LG569311116**
**CUT CORNERED RECTANGULAR
MODIFIED BRILLIANT**
6.57 X 4.85 X 3.02 MM

Carat Weight **0.88 CARAT**
Color Grade **FANCY VIVID YELLOW**
Clarity Grade **VS 1**
Polish **VERY GOOD**
Symmetry **VERY GOOD**
Fluorescence **NONE**
Inscription(s) **IGI LG569311116**

Comments: As Grown - No indication of post-growth treatment. This Laboratory Grown Diamond was created by High Pressure High Temperature (HPHT) growth process.



THIS DOCUMENT WAS PRODUCED WITH THE FOLLOWING SECURITY MEASURES: SPECIAL DOCUMENT PAPER, INK SCREENS, WATERMARK, BACKGROUND DESIGN, HOLOGRAM AND OTHER SECURITY FEATURES NOT LISTED AND DO EXCEED DOCUMENT SECURITY INDUSTRY GUIDELINES.

For terms & conditions and to verify this report, please visit www.igi.org