



**ELECTRONIC COPY**

## LABORATORY GROWN DIAMOND REPORT

February 17, 2023	
IGI Report Number	LG569385423
Description	LABORATORY GROWN DIAMOND
Shape and Cutting Style	EMERALD CUT
Measurements	7.25 X 4.57 X 3.02 MM

## GRADING RESULTS

Carat Weight	1.00 CARAT
Color Grade	E
Clarity Grade	SI 2

### ADDITIONAL GRADING INFORMATION

Polish	EXCELLENT
Symmetry	VERY GOOD
Fluorescence	NONE

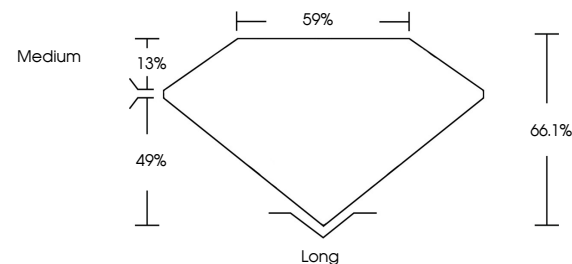
Inscription(s) **LG569385423**  
 Comments: This Laboratory Grown Diamond was created by Chemical Vapor Deposition (CVD) growth process and may include post-growth treatment. Type IIa

## LABORATORY GROWN DIAMOND REPORT

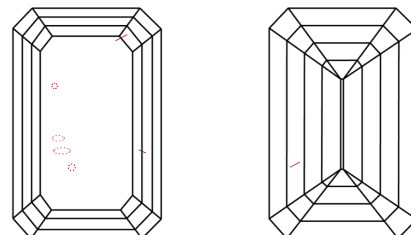
LG569385423

Report verification at [igi.org](http://igi.org)

## PROPORTIONS



## CLARITY CHARACTERISTICS



## KEY TO SYMBOLS

Red symbols indicate internal characteristics.  
Green symbols indicate external characteristics.

LABORATORY GROWN  
DIAMOND REPORT

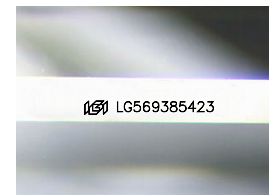
## GRADING SCALES

## CLARITY

IF	VVS <sup>1-2</sup>	VS <sup>1-2</sup>	SI <sup>1-2</sup>	I <sup>1-3</sup>
Internally Flawless	Very Very Slightly Included	Very Slightly Included	Slightly Included	Included

**COLOR**

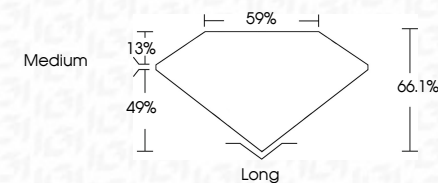
D E F G H I J Faint Very Light Light



Sample Image Used



February 17, 2023	
IGI Report Number	LG569385423
Description	LABORATORY GROWN DIAMOND
Shape and Cutting Style	EMERALD CUT
Measurements	7.25 X 4.57 X 3.02 MM
<b>GRADING RESULTS</b>	
Carat Weight	1.00 CARAT
Color Grade	E
Clarity Grade	S1 2



### ADDITIONAL GRADING INFORMATION

Polish	EXCELLENT
Symmetry	VERY GOOD
Fluorescence	NONE
Inscription(s)	157 LG569385423

Comments: This Laboratory Grown Diamond was created by Chemical Vapor Deposition (CVD) growth process and may include post-growth treatment.  
Type IIa



© IGI 2020, International Gemological Institute

FD - 10 20



THIS DOCUMENT WAS PRODUCED WITH THE FOLLOWING SECURITY MEASURES: SPECIAL DOCUMENT PAPER, INK SCREENS, WATERMARK, BACKGROUND DESIGNS, HOLOGRAM AND OTHER SECURITY FEATURES NOT LISTED AND DO EXCEED DOCUMENT SECURITY INDUSTRY GUIDELINE

**www.igi.org**

February 17, 2023  
GI Report No LG569385423

<b>G Report No</b>	<b>L6509385623</b>
<b>General CUT</b>	<b>1.00 CARAT E</b>
<b>75.25 X 45.7 X 3.02 MM</b>	<b>S / 2</b>
<b>Carat Weight</b>	<b>66.1%</b>
<b>Color Grade</b>	<b>59%</b>
<b>Cutty Grade</b>	<b>Medium</b>
<b>Depth</b>	<b>Long</b>
<b>Table</b>	<b>EXCELLENT</b>
<b>Girdle</b>	<b>VERY GOOD</b>
<b>Culet</b>	<b>NONE</b>
<b>Poleish</b>	<b>symmetry</b>
<b>Fluorescence</b>	<b>none</b>

**Comments:**  
This Laboratory Grown Diamond was created by Chemical Vapor Deposition (CVD) growth process and may include post-growth treatment.