



**INTERNATIONAL  
GEMOLOGICAL  
INSTITUTE**

**ELECTRONIC COPY**

**LABORATORY GROWN  
DIAMOND REPORT**

**LG569395223**

**IGI LABORATORY GROWN  
DIAMOND ID REPORT**

February 14, 2023  
IGI Report Number **LG569395223**  
**ROUND BRILLIANT**  
**5.75 - 5.77 X 3.47 MM**  
Carat Weight 0.70 CARAT  
Color Grade D  
Clarity Grade VS 2  
Cut Grade IDEAL  
Polish EXCELLENT  
Symmetry EXCELLENT  
Fluorescence NONE  
Inscription(s) LG569395223

Comments: As Grown - No indication of post-growth treatment. This Laboratory Grown Diamond was created by High Pressure High Temperature (HPHT) growth process. Type II

**LABORATORY GROWN DIAMOND REPORT**

**IGI LABORATORY GROWN DIAMOND IDENTIFICATION REPORT**

February 14, 2023  
IGI Report Number LG569395223  
Description LABORATORY GROWN DIAMOND  
Shape and Cutting Style ROUND BRILLIANT  
Measurements 5.75 - 5.77 X 3.47 MM

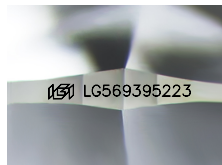
**GRADING RESULTS**

Carat Weight 0.70 CARAT  
Color Grade D  
Clarity Grade VS 2  
Cut Grade IDEAL

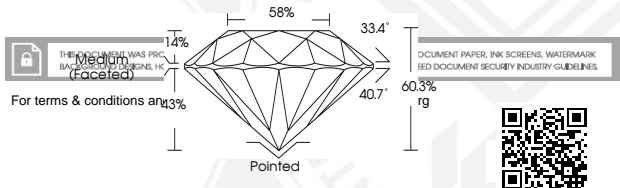
**ADDITIONAL GRADING INFORMATION**

Polish EXCELLENT  
Symmetry EXCELLENT  
Fluorescence NONE  
Inscription(s) LG569395223

Comments: As Grown - No indication of post-growth treatment. This Laboratory Grown Diamond was created by High Pressure High Temperature (HPHT) growth process. Type II



Sample Image Used



For terms & conditions and

**IGI LABORATORY GROWN  
DIAMOND ID REPORT**

February 14, 2023  
IGI Report Number **LG569395223**  
**ROUND BRILLIANT**  
**5.75 - 5.77 X 3.47 MM**  
Carat Weight 0.70 CARAT  
Color Grade D  
Clarity Grade VS 2  
Cut Grade IDEAL  
Polish EXCELLENT  
Symmetry EXCELLENT  
Fluorescence NONE  
Inscription(s) LG569395223

Comments: As Grown - No indication of post-growth treatment. This Laboratory Grown Diamond was created by High Pressure High Temperature (HPHT) growth process. Type II