



**ELECTRONIC COPY**

**LABORATORY GROWN DIAMOND REPORT**

February 23, 2023  
 IGI Report Number **LG570363511**  
 Description **LABORATORY GROWN  
DIAMOND**  
 Shape and Cutting Style **ROUND BRILLIANT**  
 Measurements **6.70 - 6.78 X 4.09 MM**

**GRADING RESULTS**

Carat Weight **1.14 CARAT**  
 Color Grade **G**  
 Clarity Grade **VS 1**  
 Cut Grade **IDEAL**

**ADDITIONAL GRADING INFORMATION**

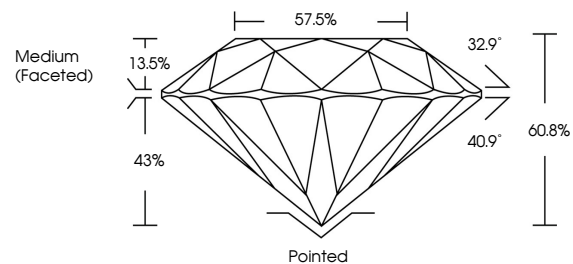
Polish **EXCELLENT**  
 Symmetry **EXCELLENT**  
 Fluorescence **NONE**  
 Inscription(s) **IGI LG570363511**

Comments: This Laboratory Grown Diamond was created by Chemical Vapor Deposition (CVD) growth process and may include post-growth treatment. Type IIa

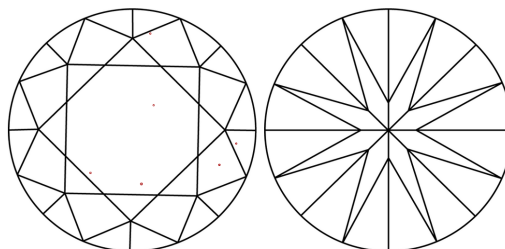
**LABORATORY GROWN DIAMOND REPORT**

**LG570363511**  
 Report verification at [igi.org](http://igi.org)

**PROPORTIONS**



**CLARITY CHARACTERISTICS**



**KEY TO SYMBOLS**

Red symbols indicate internal characteristics.  
 Green symbols indicate external characteristics.

**LABORATORY GROWN  
DIAMOND REPORT**

**GRADING SCALES**

**CLARITY**

| IF                  | VVS <sup>1-2</sup>          | VS <sup>1-2</sup>      | SI <sup>1-2</sup> | I <sup>1-3</sup> |
|---------------------|-----------------------------|------------------------|-------------------|------------------|
| Internally Flawless | Very Very Slightly Included | Very Slightly Included | Slightly Included | Included         |

**COLOR**

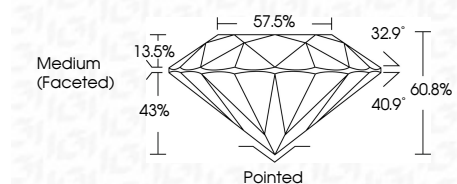
| D | E | F | G | H | I | J | Faint | Very Light | Light |
|---|---|---|---|---|---|---|-------|------------|-------|
|---|---|---|---|---|---|---|-------|------------|-------|

**LABORATORY GROWN DIAMOND REPORT**

February 23, 2023  
 IGI Report Number **LG570363511**  
 Description **LABORATORY GROWN  
DIAMOND**  
 Shape and Cutting Style **ROUND BRILLIANT**  
 Measurements **6.70 - 6.78 X 4.09 MM**

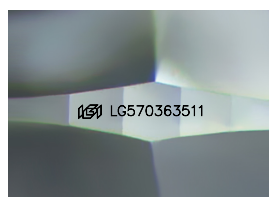
**GRADING RESULTS**

Carat Weight **1.14 CARAT**  
 Color Grade **G**  
 Clarity Grade **VS 1**  
 Cut Grade **IDEAL**



**ADDITIONAL GRADING INFORMATION**

Polish **EXCELLENT**  
 Symmetry **EXCELLENT**  
 Fluorescence **NONE**  
 Inscription(s) **IGI LG570363511**  
 Comments: This Laboratory Grown Diamond was created by Chemical Vapor Deposition (CVD) growth process and may include post-growth treatment. Type IIa



Sample Image Used



**IGI**

|                   |                           |                 |                       |            |   |      |       |       |     |       |       |         |           |           |      |                 |
|-------------------|---------------------------|-----------------|-----------------------|------------|---|------|-------|-------|-----|-------|-------|---------|-----------|-----------|------|-----------------|
| February 23, 2023 | IGI Report No LG570363511 | ROUND BRILLIANT | 6.70 - 6.78 X 4.09 MM | 1.14 CARAT | G | VS 1 | IDEAL | 60.8% | 43% | 32.9° | 40.9° | Pointed | EXCELLENT | EXCELLENT | NONE | IGI LG570363511 |
|                   |                           |                 |                       |            |   |      |       |       |     |       |       |         |           |           |      |                 |

Comments: This Laboratory Grown Diamond was created by Chemical Vapor Deposition (CVD) growth process and may include post-growth treatment. Type IIa