



ELECTRONIC COPY

LG571302511

Report verification at igi.org

LABORATORY GROWN DIAMOND REPORT

March 3, 2023
IGI Report Number **LG571302511**
Description **LABORATORY GROWN
DIAMOND**
Shape and Cutting Style **ROUND BRILLIANT**
Measurements **10.31 - 10.35 X 6.42 MM**

GRADING RESULTS

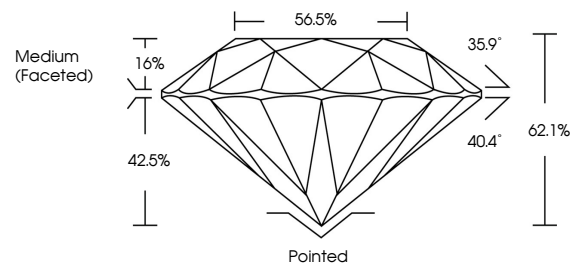
Carat Weight **4.25 CARATS**
Color Grade **F**
Clarity Grade **VVS 2**
Cut Grade **IDEAL**

ADDITIONAL GRADING INFORMATION

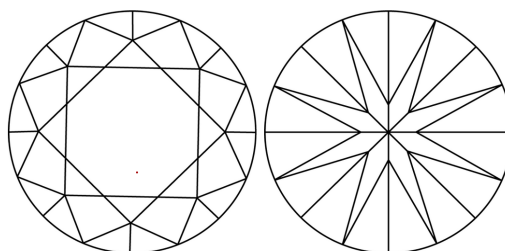
Polish **EXCELLENT**
Symmetry **EXCELLENT**
Fluorescence **NONE**
Inscription(s) **IGI LG571302511**

Comments: This Laboratory Grown Diamond was created by Chemical Vapor Deposition (CVD) growth process and may include post-growth treatment. Type IIa

PROPORTIONS



CLARITY CHARACTERISTICS



KEY TO SYMBOLS

Red symbols indicate internal characteristics.
Green symbols indicate external characteristics.

GRADING SCALES

CLARITY

IF	VVS ¹⁻²	VS ¹⁻²	SI ¹⁻²	I ¹⁻³
Internally Flawless	Very Very Slightly Included	Very Slightly Included	Slightly Included	Included

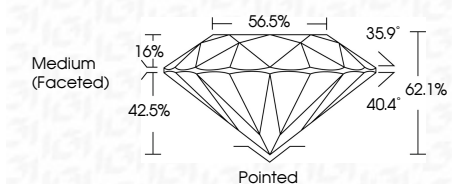
COLOR

D	E	F	G	H	I	J	Faint	Very Light	Light

March 3, 2023
IGI Report Number **LG571302511**
Description **LABORATORY GROWN
DIAMOND**
Shape and Cutting Style **ROUND BRILLIANT**
Measurements **10.31 - 10.35 X 6.42 MM**

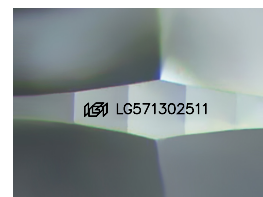
GRADING RESULTS

Carat Weight **4.25 CARATS**
Color Grade **F**
Clarity Grade **VVS 2**
Cut Grade **IDEAL**



ADDITIONAL GRADING INFORMATION

Polish **EXCELLENT**
Symmetry **EXCELLENT**
Fluorescence **NONE**
Inscription(s) **IGI LG571302511**
Comments: This Laboratory Grown Diamond was created by Chemical Vapor Deposition (CVD) growth process and may include post-growth treatment. Type IIa



Sample Image Used



March 3, 2023	IGI Report No LG571302511	ROUND BRILLIANT	10.31 - 10.35 X 6.42 MM	4.25 CARATS	F	VVS 2	IDEAL	62.1%	56.5%	Medium (Faceted)	Pointed	EXCELLENT	EXCELLENT	NONE	IGI LG571302511
Carat Weight															
Color Grade															
Clarity Grade															
Cut Grade															
Depth															
Table															
Girdle															
Culet															
Polish															
Symmetry															
Fluorescence															
Inscription(s)															

Comments: This Laboratory Grown Diamond was created by Chemical Vapor Deposition (CVD) growth process and may include post-growth treatment. Type IIa