



LABORATORY GROWN DIAMOND REPORT

Description	LABORATORY GROWN DIAMOND
-------------	-----------------------------

Measurements 8.24 X 8.11 X 5.18 MM

Carat Weight 3.02 CARATS

Clarity Grade VS 1

Polish **EXCELLENT**Symmetry **EXCELLENT**Fluorescence **NONE**Inscription(s) LG571310509

Comments: This Laboratory Grown Diamond was created by Chemical Vapor Deposition (CVD) growth process and may include post-growth treatment.
Type IIa

LG571310509

Report verification at igi.org

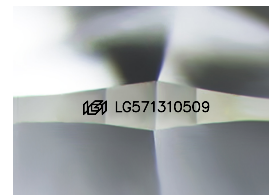
Diagram illustrating the proportions of a diamond-shaped gemstone. The top width is 60%. The top height is 13%. The bottom height is 47%. The total height is 63.9%. The top is labeled "Medium To Very Thick (Faceted)" and the bottom is labeled "Pointed".

Red symbols indicate internal characteristics.
Green symbols indicate external characteristics.

GRADING SCALES

IF	VVS ¹⁻²	VS ¹⁻²	SI ¹⁻²	I ¹⁻³
Internally Flawless	Very Very Slightly Included	Very Slightly Included	Slightly Included	Included

D E F G H I J Faint Very Light Light



Sample Image Used

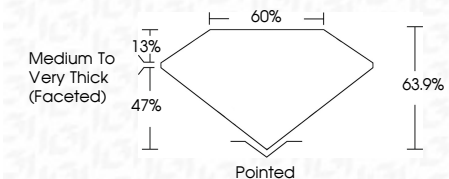


Measurements **8.24 X 8.11 X 5.18 MM**

Carat Weight **3.02 CARATS**

Color Grade I

Clarity Grade VS 1

Polish **EXCELLENCE**Symmetry **EXCELLENCE**

Fluorescence NONI

Inscription(s) LG57131050

Comments: This Laboratory Grown Diamond was created by Chemical Vapor Deposition (CVD) growth process and may include post-growth treatment.
Type IIa



© IGI 2020, International Gemological Institute

FD - 10 20

www.igi.org

THIS DOCUMENT WAS PRODUCED WITH THE FOLLOWING SECURITY MEASURES: SPECIAL DOCUMENT PAPER, INK SCREENS, WATERMARK, BACKGROUND DESIGNS, HOLOGRAM AND OTHER SECURITY FEATURES NOT LISTED AND DO EXCEED DOCUMENT SECURITY INDUSTRY GUIDELINES

[illegible]