



**ELECTRONIC COPY**

**LABORATORY GROWN DIAMOND REPORT**

March 4, 2023  
 IGI Report Number **LG571321430**  
 Description **LABORATORY GROWN  
DIAMOND**  
 Shape and Cutting Style **CUT CORNERED RECTANGULAR  
MODIFIED BRILLIANT**  
 Measurements **9.05 X 6.38 X 4.25 MM**

**GRADING RESULTS**

Carat Weight **2.11 CARATS**  
 Color Grade **H**  
 Clarity Grade **VS 1**

**ADDITIONAL GRADING INFORMATION**

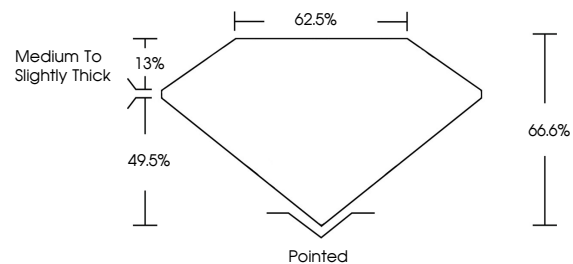
Polish **EXCELLENT**  
 Symmetry **EXCELLENT**  
 Fluorescence **NONE**  
 Inscription(s) **IGI LG571321430**

Comments: This Laboratory Grown Diamond was created by Chemical Vapor Deposition (CVD) growth process and may include post-growth treatment. Type IIa

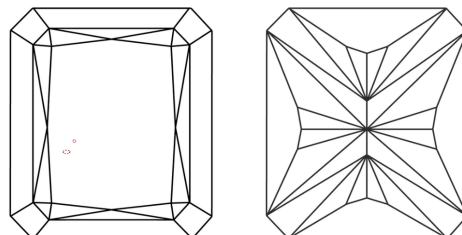
**LABORATORY GROWN DIAMOND REPORT**

**LG571321430**  
 Report verification at [igi.org](http://igi.org)

**PROPORTIONS**



**CLARITY CHARACTERISTICS**



**KEY TO SYMBOLS**

Red symbols indicate internal characteristics.  
 Green symbols indicate external characteristics.

**LABORATORY GROWN  
DIAMOND REPORT**

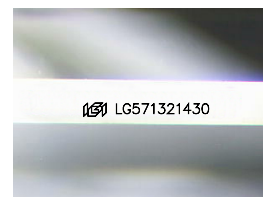
**GRADING SCALES**

**CLARITY**

IF	VVS <sup>1-2</sup>	VS <sup>1-2</sup>	SI <sup>1-2</sup>	I <sup>1-3</sup>
Internally Flawless	Very Very Slightly Included	Very Slightly Included	Slightly Included	Included

**COLOR**

D	E	F	G	H	I	J	Faint	Very Light	Light



Sample Image Used

**LABORATORY GROWN DIAMOND REPORT**

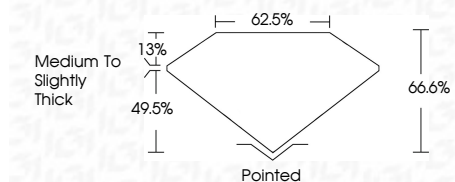
March 4, 2023  
 IGI Report Number **LG571321430**  
 Description **LABORATORY GROWN  
DIAMOND**  
 Shape and Cutting Style **CUT CORNERED  
RECTANGULAR MODIFIED  
BRILLIANT**  
 Measurements **9.05 X 6.38 X 4.25 MM**

**GRADING RESULTS**

Carat Weight **2.11 CARATS**  
 Color Grade **H**  
 Clarity Grade **VS 1**

**ADDITIONAL GRADING INFORMATION**

Polish **EXCELLENT**  
 Symmetry **EXCELLENT**  
 Fluorescence **NONE**  
 Inscription(s) **IGI LG571321430**  
 Comments: This Laboratory Grown Diamond was created by Chemical Vapor Deposition (CVD) growth process and may include post-growth treatment. Type IIa



**IGI**

March 4, 2023  
 IGI Report No LG571321430  
**CUT CORNERED RECT. MODIFIED BRILLIANT**  
 9.05 X 6.38 X 4.25 MM  
 2.11 CARATS  
 H  
 VS 1  
 66.6%  
 62.5%  
 Medium to Slightly Thick  
 Pointed  
 EXCELLENT  
 EXCELLENT  
 NONE  
 IGI LG571321430

Comments: This Laboratory Grown Diamond was created by Chemical Vapor Deposition (CVD) growth process and may include post-growth treatment. Type IIa