



**INTERNATIONAL  
GEMOLOGICAL  
INSTITUTE**

**ELECTRONIC COPY**

**LABORATORY GROWN  
DIAMOND REPORT**

**LG572331225**

**IGI LABORATORY GROWN  
DIAMOND ID REPORT**

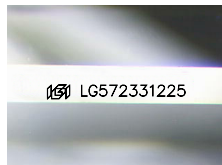
March 29, 2023  
IGI Report Number **LG572331225**  
**EMERALD CUT**  
**5.27 X 3.67 X 2.42 MM**  
Carat Weight 0.47 CARAT  
Color Grade FANCY DEEP BLUE  
Clarity Grade VS 2  
Polish VERY GOOD  
Symmetry VERY GOOD  
Fluorescence NONE  
Inscription(s) LG572331225

Comments: This Laboratory Grown Diamond was created by Chemical Vapor Deposition (CVD) growth process. Indications of post-growth treatment.

**LABORATORY GROWN DIAMOND REPORT**

**IGI LABORATORY GROWN DIAMOND IDENTIFICATION REPORT**

March 29, 2023  
IGI Report Number LG572331225  
Description LABORATORY GROWN DIAMOND  
Shape and Cutting Style EMERALD CUT  
Measurements 5.27 X 3.67 X 2.42 MM



Sample Image Used

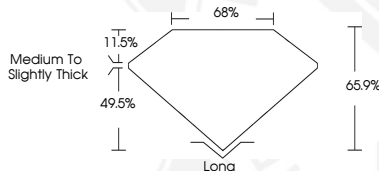
**GRADING RESULTS**

Carat Weight 0.47 CARAT  
Color Grade FANCY DEEP BLUE  
Clarity Grade VS 2

**ADDITIONAL GRADING INFORMATION**

Polish VERY GOOD  
Symmetry VERY GOOD  
Fluorescence NONE  
Inscription(s) LG572331225

Comments: This Laboratory Grown Diamond was created by Chemical Vapor Deposition (CVD) growth process. Indications of post-growth treatment.



**IGI LABORATORY GROWN  
DIAMOND ID REPORT**

March 29, 2023  
IGI Report Number **LG572331225**  
**EMERALD CUT**  
**5.27 X 3.67 X 2.42 MM**  
Carat Weight 0.47 CARAT  
Color Grade FANCY DEEP BLUE  
Clarity Grade VS 2  
Polish VERY GOOD  
Symmetry VERY GOOD  
Fluorescence NONE  
Inscription(s) LG572331225

Comments: This Laboratory Grown Diamond was created by Chemical Vapor Deposition (CVD) growth process. Indications of post-growth treatment.

THIS DOCUMENT WAS PRODUCED WITH THE FOLLOWING SECURITY MEASURES: SPECIAL DOCUMENT PAPER, INK SCREENS, WATERMARK, BACKGROUND DESIGN, HOLOGRAM AND OTHER SECURITY FEATURES NOT LISTED AND DO EXCEED DOCUMENT SECURITY INDUSTRY GUIDELINES.

For terms & conditions and to verify this report, please visit [www.igi.org](http://www.igi.org)